

/ WORLD CLASS GOLD & COPPER

CORPORATE PRESENTATION / JANUARY 2022 **Highlights - Feni Island: ADK004**



Massive sulphide Cu + Au Zone:

➤ 6.4m (149.7 to 156.1m) @ 5.1% Cu & 1.6g/t Au

Incl: 3.6m (151.5 to 155.1m) @ 6.9% Cu & 2.1g/t Au

Incl: 0.7m (154.4 to 155.1m) @ 14.5% Cu & 2.4g/t Au

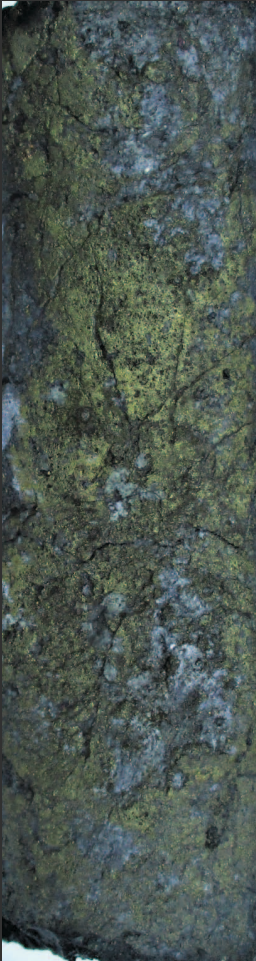
Disseminated Cu + Au Zone:

➤ 35.9m (70.7 to 106.6m) @ 0.3% Cu & 1.1g/t Au

Gold:

❖ ADK001 145m (1 – 146m) @ 0.8 g/t Au

❖ ADK004 84m (72-156m) @ 1.0 g/t Au



Disclaimer

This presentation has been prepared by Adyton Resources Corp ("Adyton" or the "Company"). The information contained in this presentation is for information purposes only and has been prepared for use in conjunction with a verbal presentation and should be read in that context.

The information contained in this presentation is not investment or financial product advice and is not intended to be used as the basis for making an investment decision. Please note that, in providing this presentation, Adyton has not considered the objectives, financial position or needs of any particular recipient. Adyton strongly suggests that investors consult a financial advisor prior to making an investment decision. It may not be reproduced, disseminated, quoted or referred to, in whole or in part, without the express consent of Adyton.

No representation or warranty, express or implied, is made as to the fairness, accuracy, completeness or correctness of the information, opinions and conclusions contained in this presentation. To the maximum extent permitted by law, none of Adyton, its related bodies corporate, shareholders or respective directors, officers, employees, agents or advisors, nor any other person accepts any liability, including, without limitation, any liability arising out of fault or negligence for any loss arising from the use of information contained in this presentation.

This presentation includes "forward – looking statements" and "forward – looking information" within the meaning of securities laws of applicable jurisdictions (collectively "forward – looking statements"). Forward looking statements can generally be identified by the use of the words "anticipate", "believe", "expect", "project", "forecast", "estimate", "likely", "intend", "should", "could", "may", "target", "plan" "guidance" and other similar expressions. Indications of, and guidance on, future earning or dividends and financial position and performance are also forward-looking statements.

Such forward-looking statements are not guarantees of future performance and involve known and unknown risks, uncertainties and other factors, many of which are beyond the control of Adyton and its officers, employees, agents or associates, that may cause actual results to differ materially from those expressed or implied in such statement. Actual results, performance or achievements may vary materially from any projections and forward looking statements and the assumptions on which those statements are based. Readers are cautioned not to place undue reliance on forward looking statements and Adyton assumes no obligation to update such information. Specific regard (amongst other things) should be given to the risk factors outlined in this presentation.

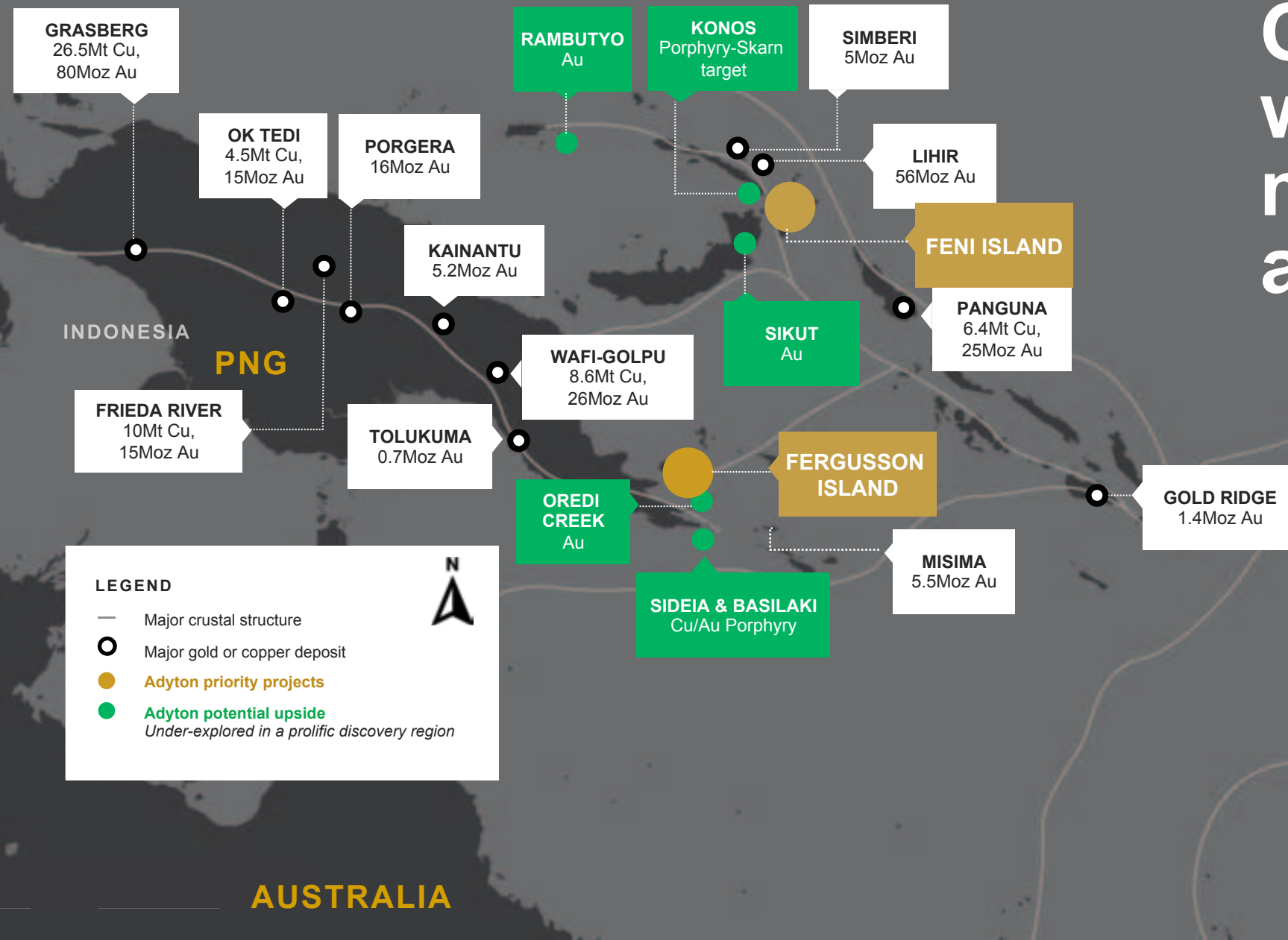
This presentation is not, and does not constitute, an offer to sell or the solicitation, invitation or recommendation to purchase any securities and neither this presentation nor anything contained in it forms the basis of any contract or commitment. This presentation is not an offer to sell, or a solicitation of an offer to buy, securities in the United States or in any other jurisdiction. No securities may be sold in the United States absent registration or an exemption from registration under the U.S. Securities Act of 1933 and applicable state law.

Non-IFRS Measures - The Company supplements its financial information reporting determined under International Financial Reporting Standards (IFRS) with certain non-IFRS financial measures, including cash operating costs, All-in Sustaining Cost, EBITDA, NPV, IRR and project payback. The Company believes that these measures provide additional meaningful information to assist management, investors and analysts in understanding the financial results and assessing our prospects for future performance.

Qualified Person

The information in this presentation has been reviewed by Rod Watt, BSc Hons (Geo), FAusIMM, Chief Geologist of Adyton Resources Corporation, who is a "Qualified Person" as defined by National Instrument 43-101 - Standards of Disclosure for Mineral Projects ("NI 43-101").

One of the world's best mining addresses



Feni Island

Regional setting and focus

Drill Program Focus:

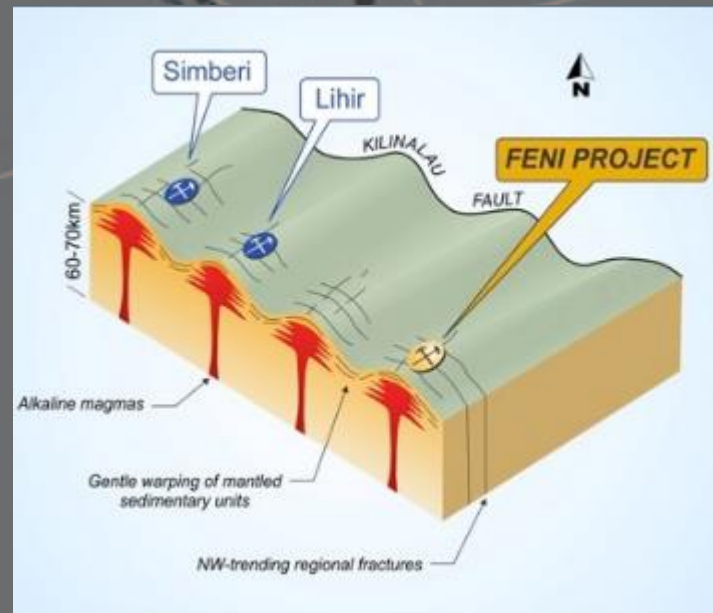
- Increase shallow Au resource and upgrade mineral resources classification
- Explore for significant Cu porphyry system by drilling IP target at greater depths than previous work

Regional setting:

- Located in the same chain as Lihir (150km) & Simberi (250km), Panguna (Bougainville) (300km)
- Scope to increase resource from 1,450,000 oz Au
- Significant potential for porphyry Cu / Au mineralization at depth
- Young geological setting (1.0m years) with significant geothermal energy potential. The adjacent Lihir project installed approximately 60 Mw.

PNG

AUSTRALIA



Feni Island

Adyton Drill Program (Jul – Oct 2021) HOLE ADK004 - Copper

“Multi-element assays have returned significant copper intersections from hole ADK004 in two zones – a shallower disseminated zone of copper mineralization followed by a zone of massive sulphide copper mineralization”

Massive sulphide Cu + Au Zone:

➤ 6.4m (149.7 to 156.1m) @ 5.1% Cu & 1.6g/t Au

Incl: 3.6m (151.5 to 155.1m) @ 6.9% Cu & 2.1g/t Au

Incl: 0.7m (154.4 to 155.1m) @ 14.5% Cu & 2.4g/t Au

Disseminated Cu + Au Zone:

➤ 35.9m (70.7 to 106.6m) @ 0.3% Cu & 1.1g/t Au



ADK004 – 155.1 – 156.1m Massive sulphide mineralization in Hydrothermal Breccia

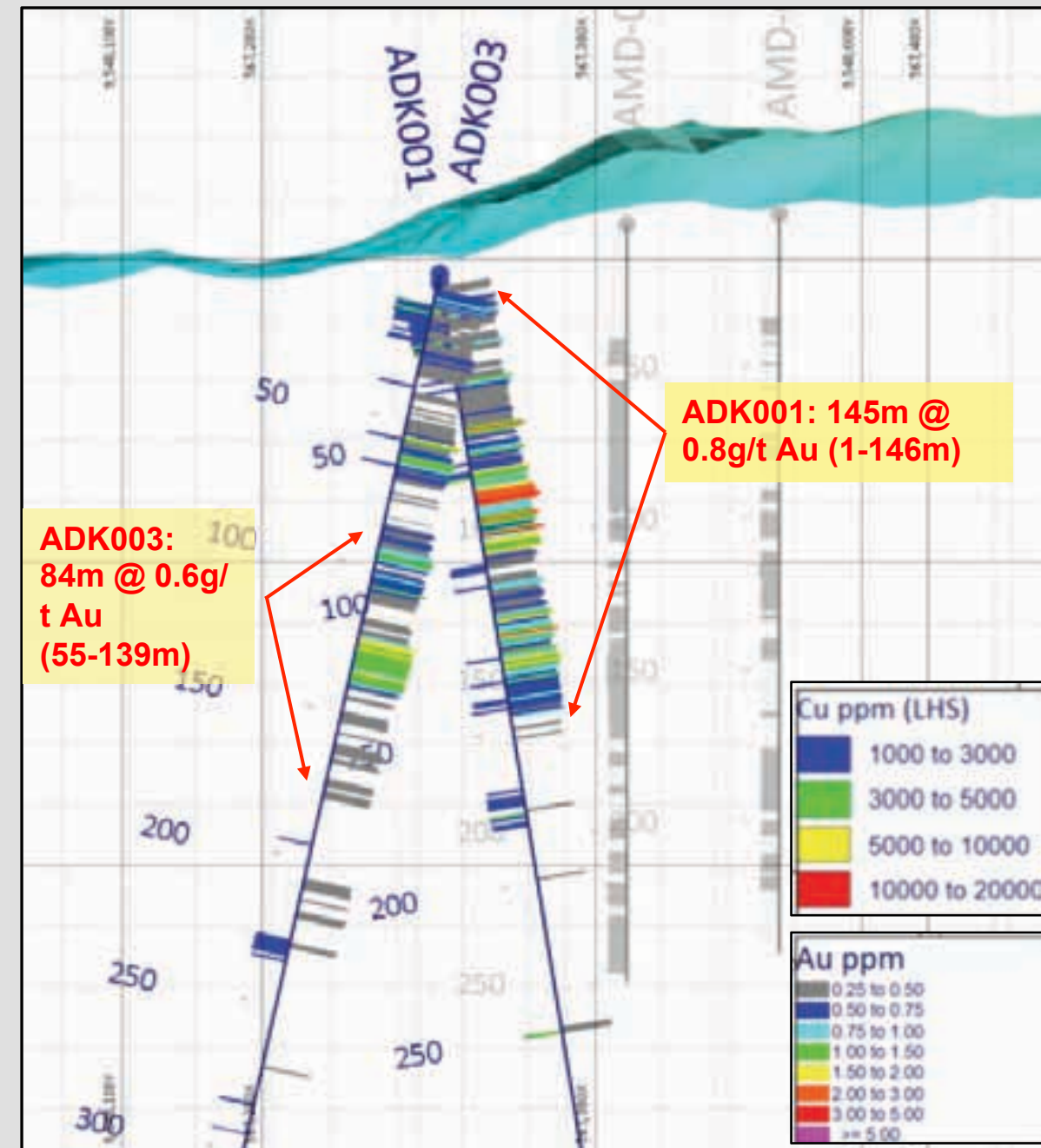
Feni Island - Drilling

Adyton Drill Program (Jul – Oct 2021)

- 1,962m in 5 drill holes (3 Kabang & 2 Matangkaka)
- ADK001 – 003 testing southern margin / IP target
- ADK004 – 005 drilled at north under-cover

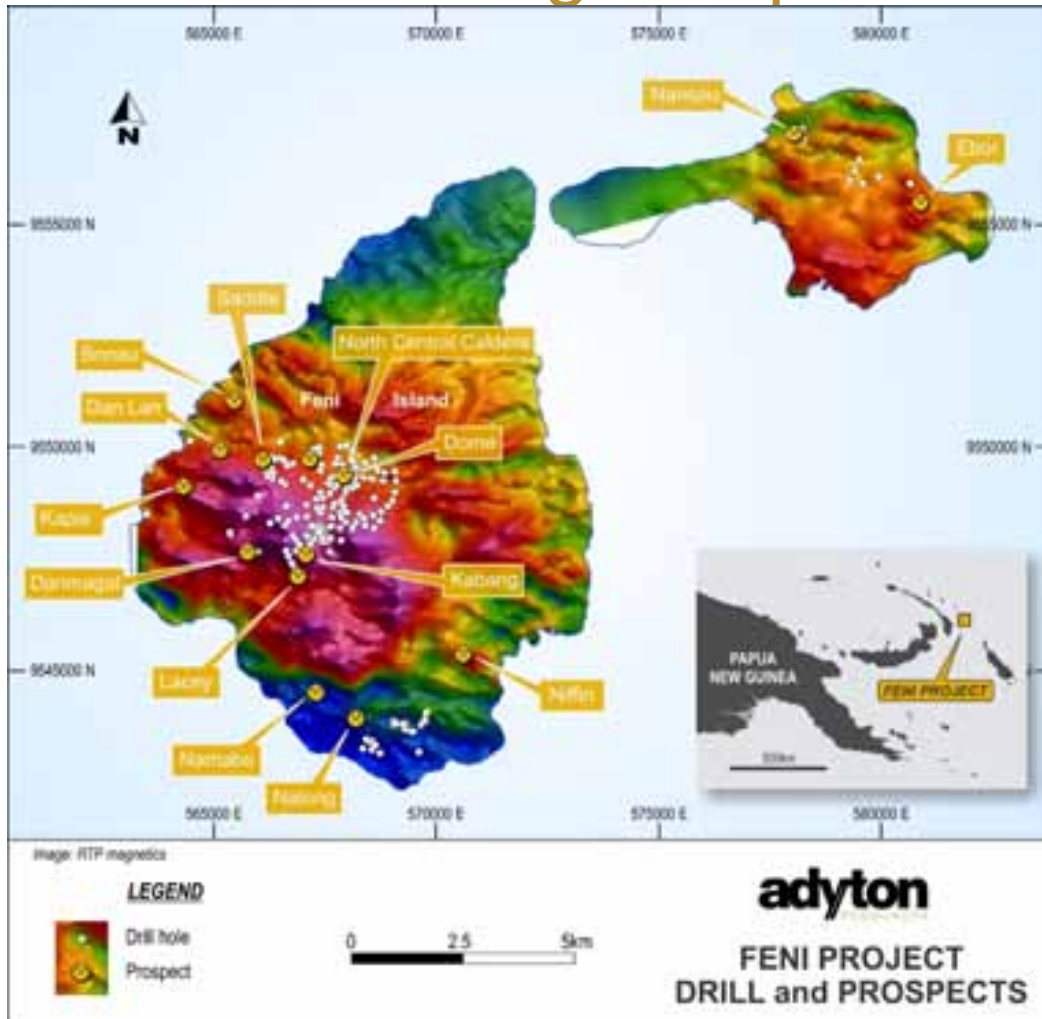
Significant Gold intersections:

- **ADK001: 145m @ 0.8g/t Au (1 - 146m)**
incl 43m @ 1.3g/t Au (48 - 91m)
28m @ 1.6g/t Au (63 – 91m)
- **ADK003: 84m @ 0.6g/t Au (55 - 139m)**
incl 2m @ 1.4g/t Au (55 – 57m)
3m @ 1.2g/t Au (61 – 64m)
6m @ 1.0g/t Au (93 – 99m)
16m @ 1.3g/t Au (124 – 139m)
- **ADK004: 84.1m @ 1.0g/t Au (72 -156.1m)**
incl 10m @ 1.4g/t Au (74 – 84m)
15.6m @ 1.2g/t Au (91 – 106.6m)
4.6m @ 2.0g/t Au (151 – 156.1m)
7m @ 1.4g/t Au (329 – 336m)
incl 1m @ 5.2g/t Au (335 – 336m)

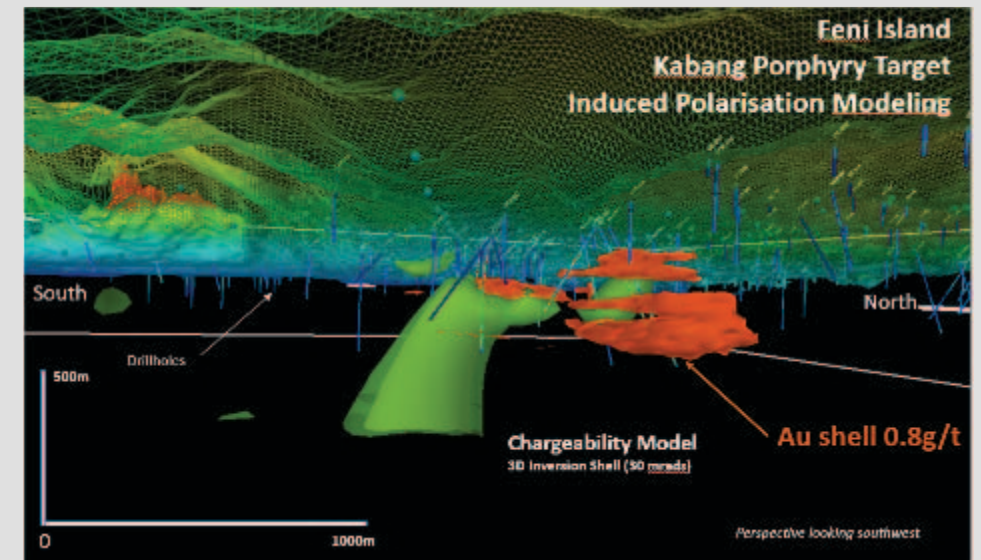


Feni Island

Historical drilling and potential



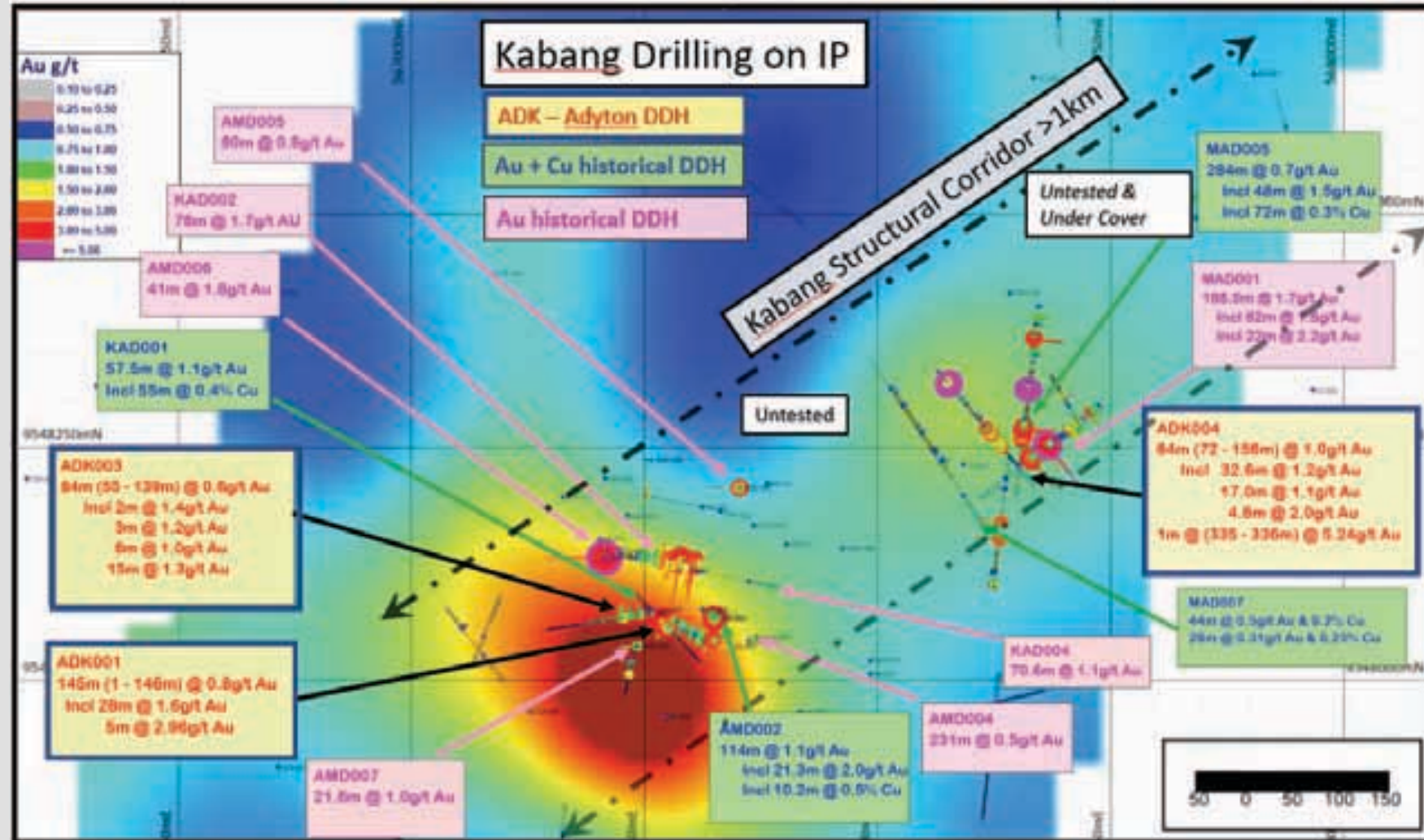
- **+30 years** of historical exploration – 212 holes drilled over 18,813m (9,707m DD & 9,106m RC and shallow AC)
- Historic drilling was largely random and did not test the key areas of Adyton's interest leaving the highest potential areas largely unexplored
- **Exploration Targets:**
 - Au Epithermal: Later-stage low sulphidation epithermal gold mineralisation associated with shallow-level boiling ("Lihir" style)
 - Cu / Au Porphyry: – Early-stage copper-gold mineralization, potassic alteration / phyllic overprint ("Panguna" style)



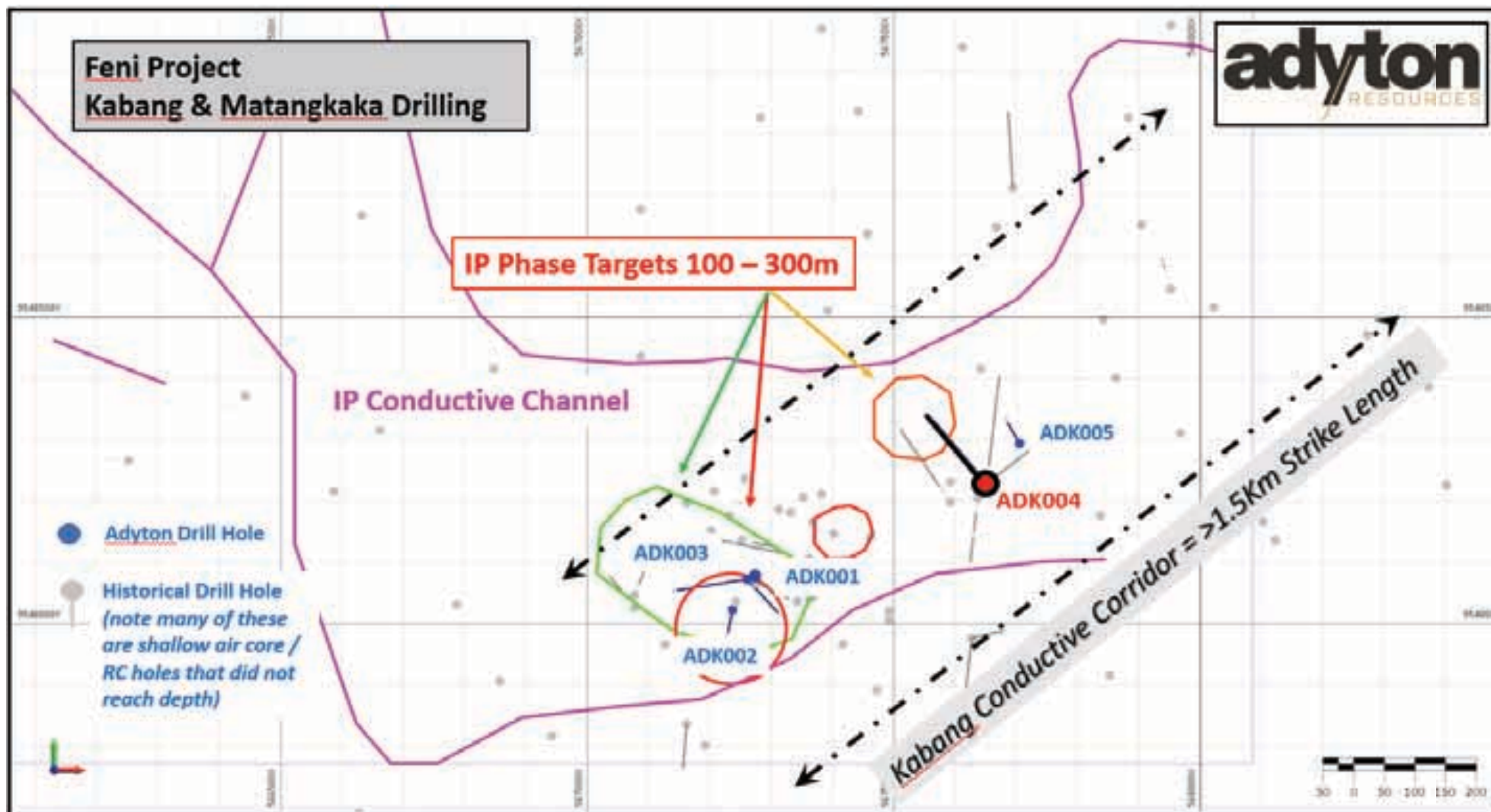
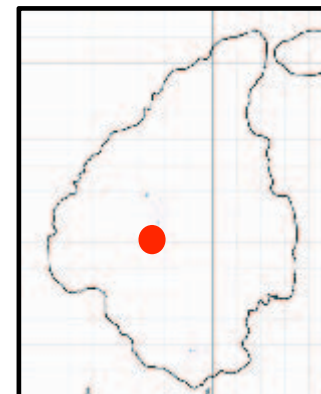
Feni Island

Copper Exploration Target

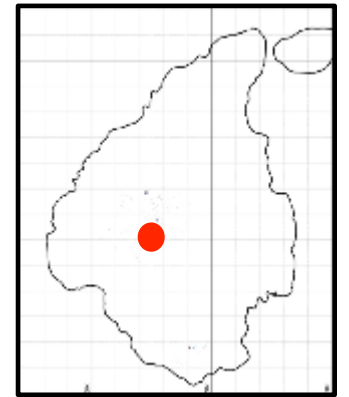
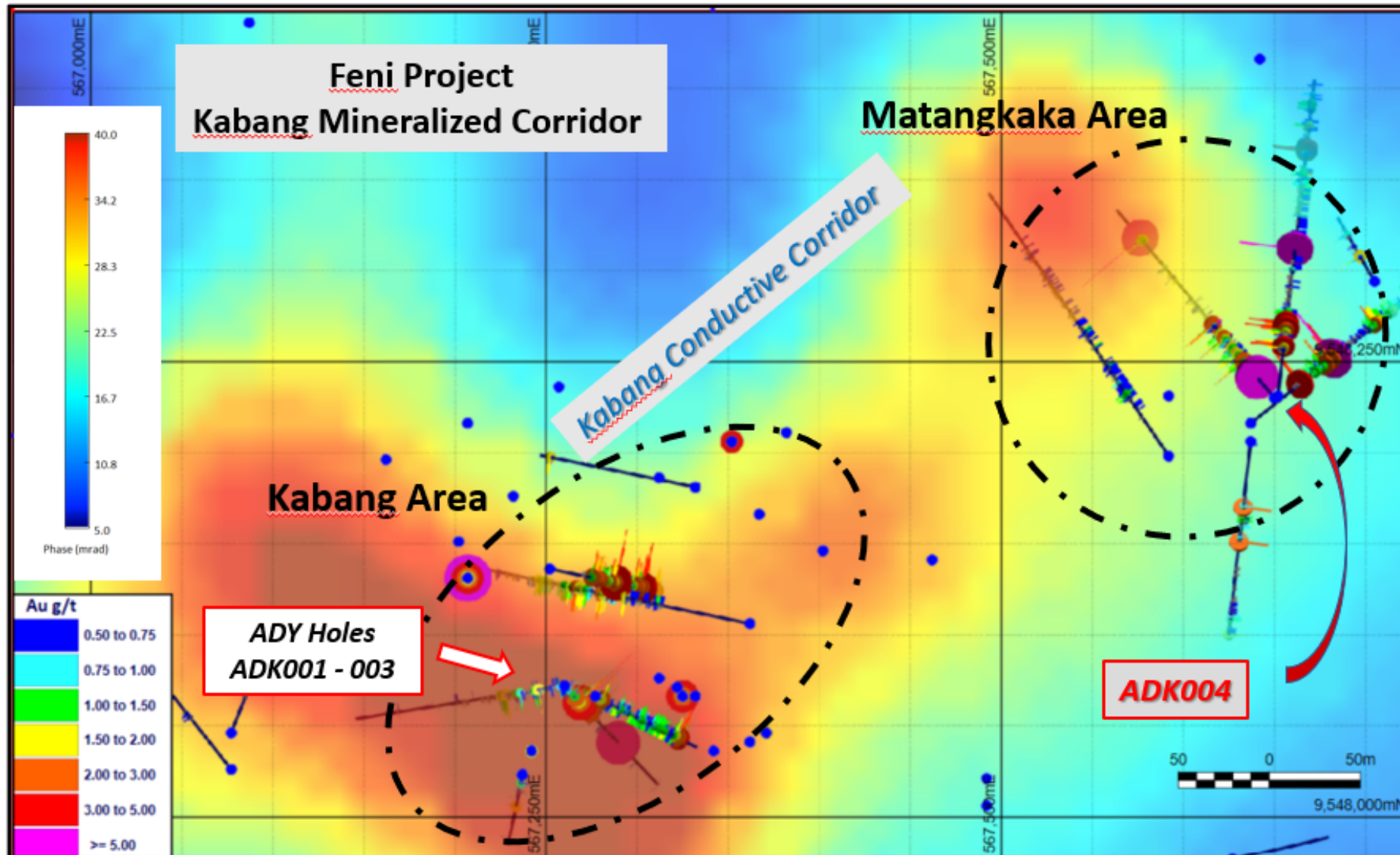
- Cu Potential at depth to be tested fully
- IP 3D Modelling indicates a chargeable and conductive intrusive body at depth
- Limited testing on IP targets to date
- Previous drilling showed significant Cu and Au intervals – Assays of up to 2% Cu
- Previous drilling was mostly shallow (<150m)
- 5g/t Au in previous drill cores
- Significant copper intercepts in both KAD and MAD series of holes
- Panned concentrates with range up to 120 g/t visible Au



Feni Island Exploration Drilling Program



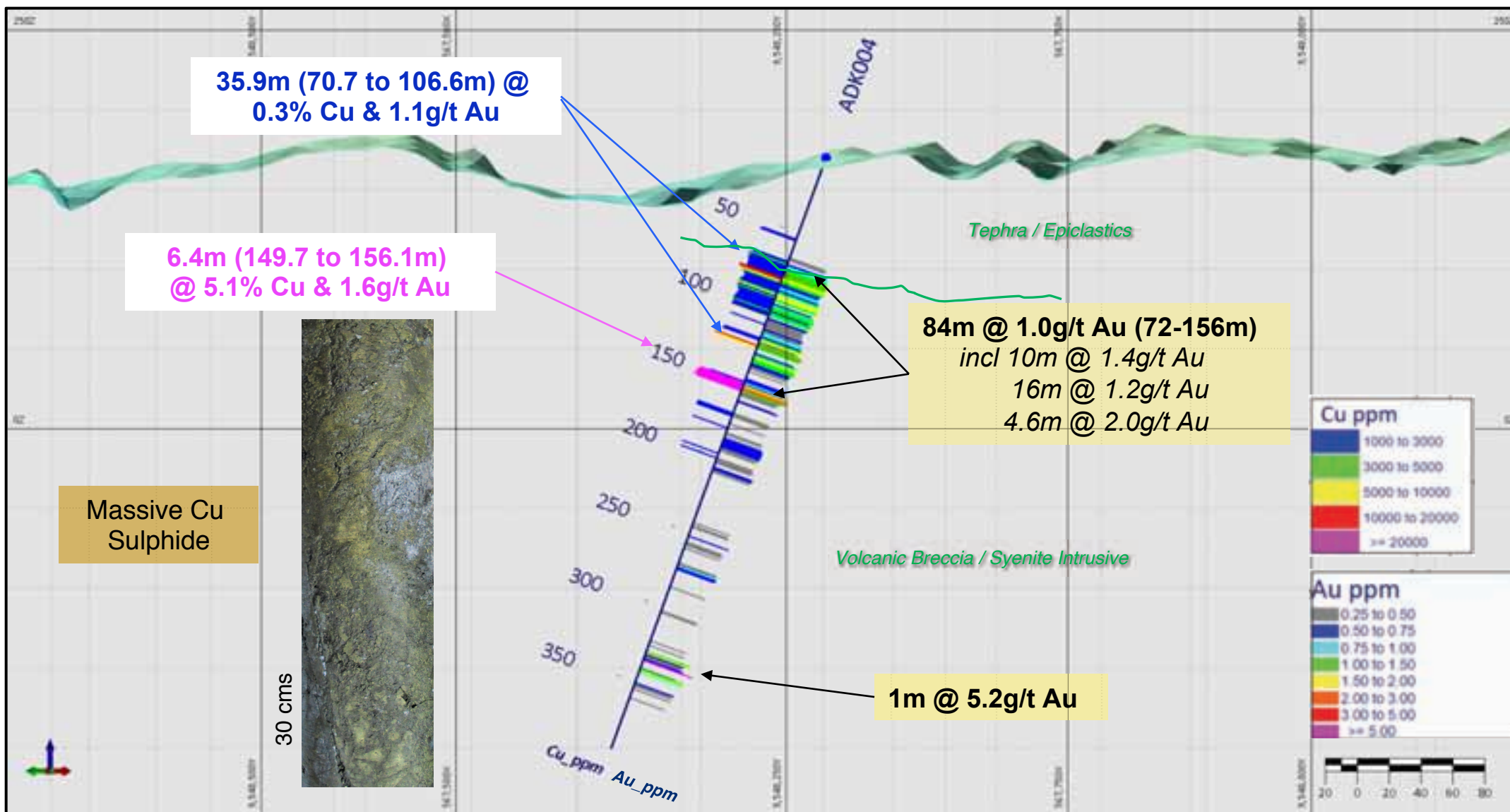
Feni Island – drilling on IP



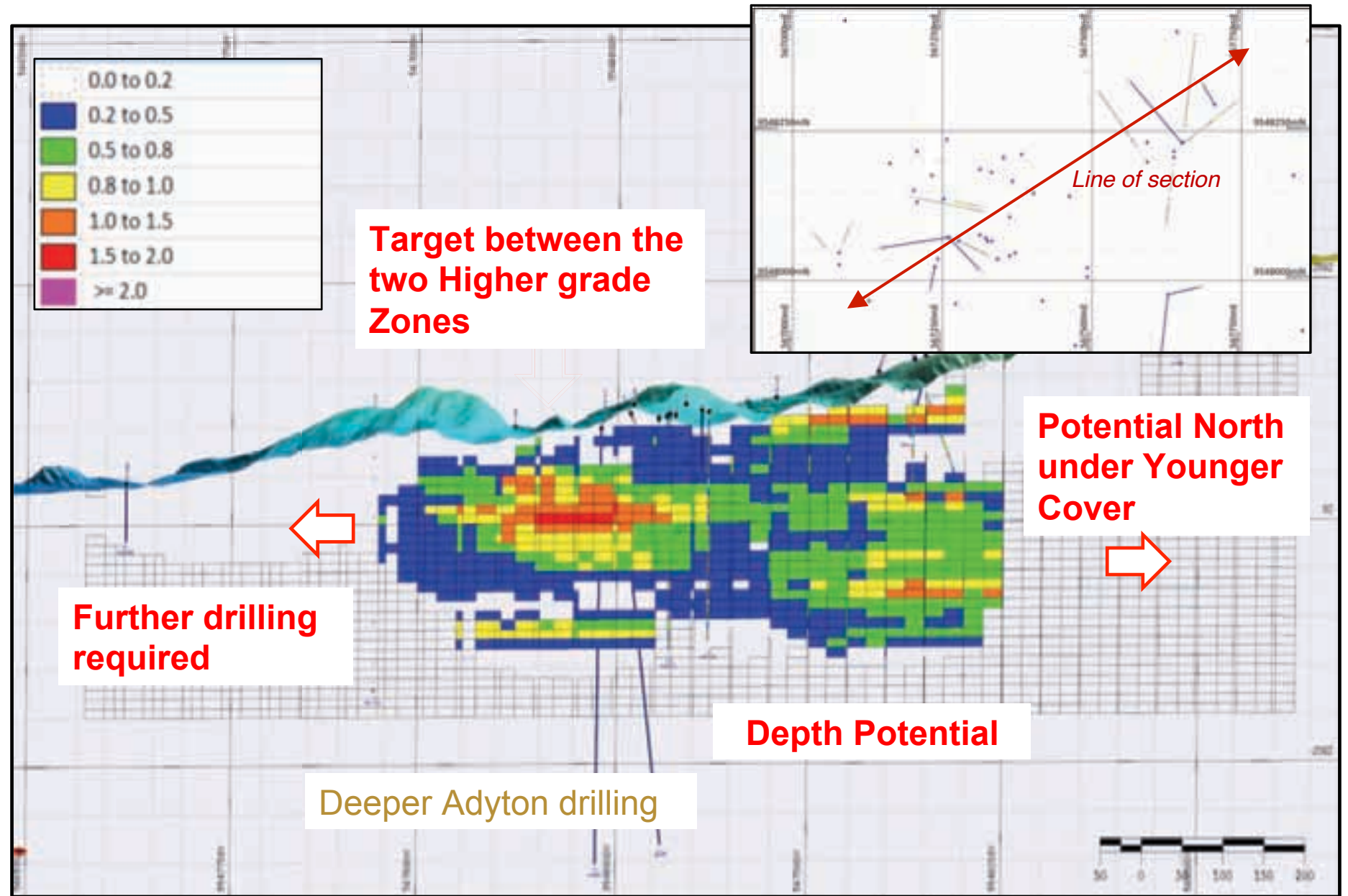
Kabang drilling area showing IP conductive channel, IP phase targets and location of the five completed Adyton diamond drill holes.

Note the prospective corridor is > 1.5kms long, lightly drilled, and under younger volcanic cover at the northern end which has hindered previous exploration efforts.

Feni Island - Copper



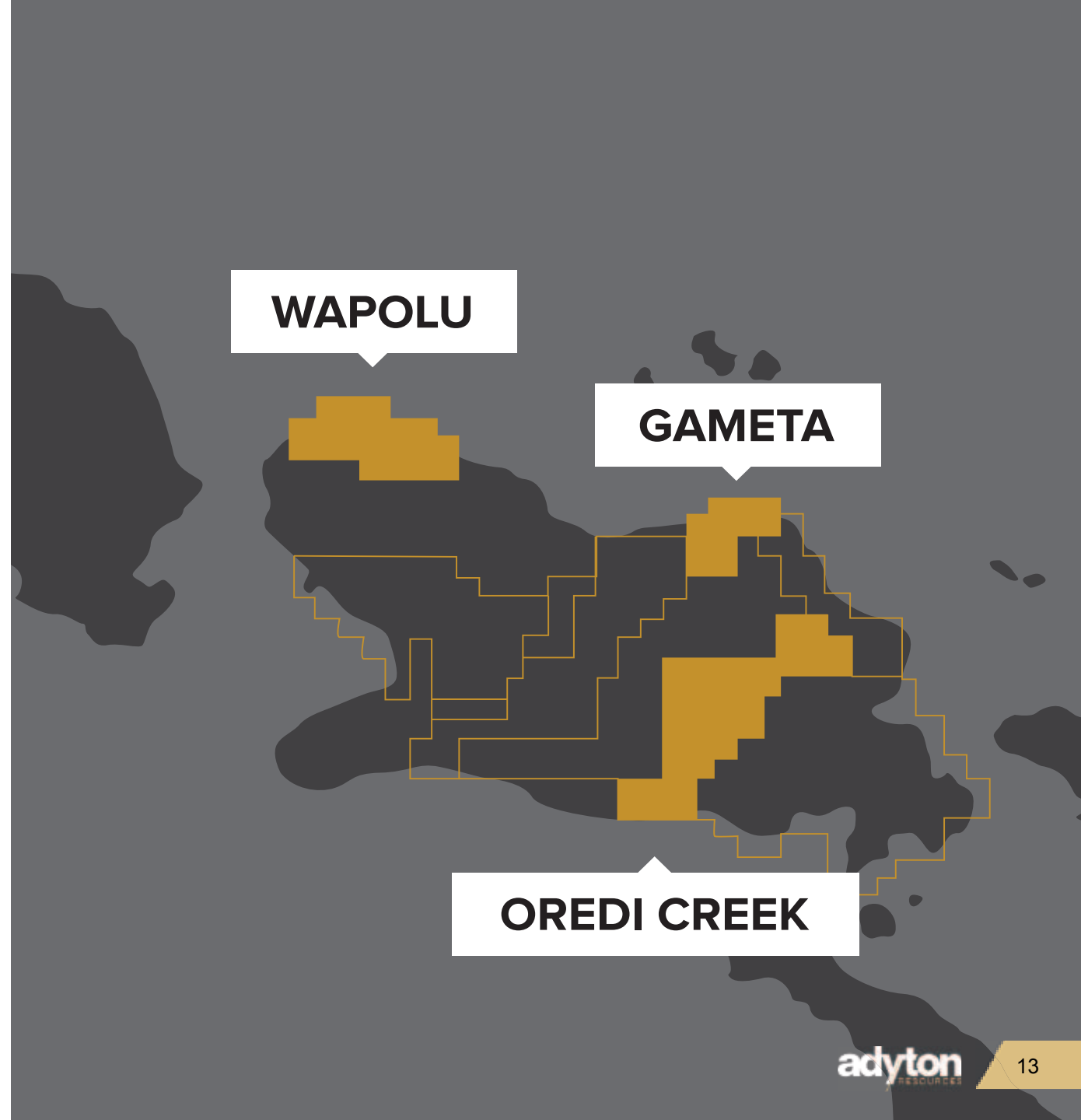
Feni Island Block Model long section and Drill Targets



Fergusson Island

A focus on near term production

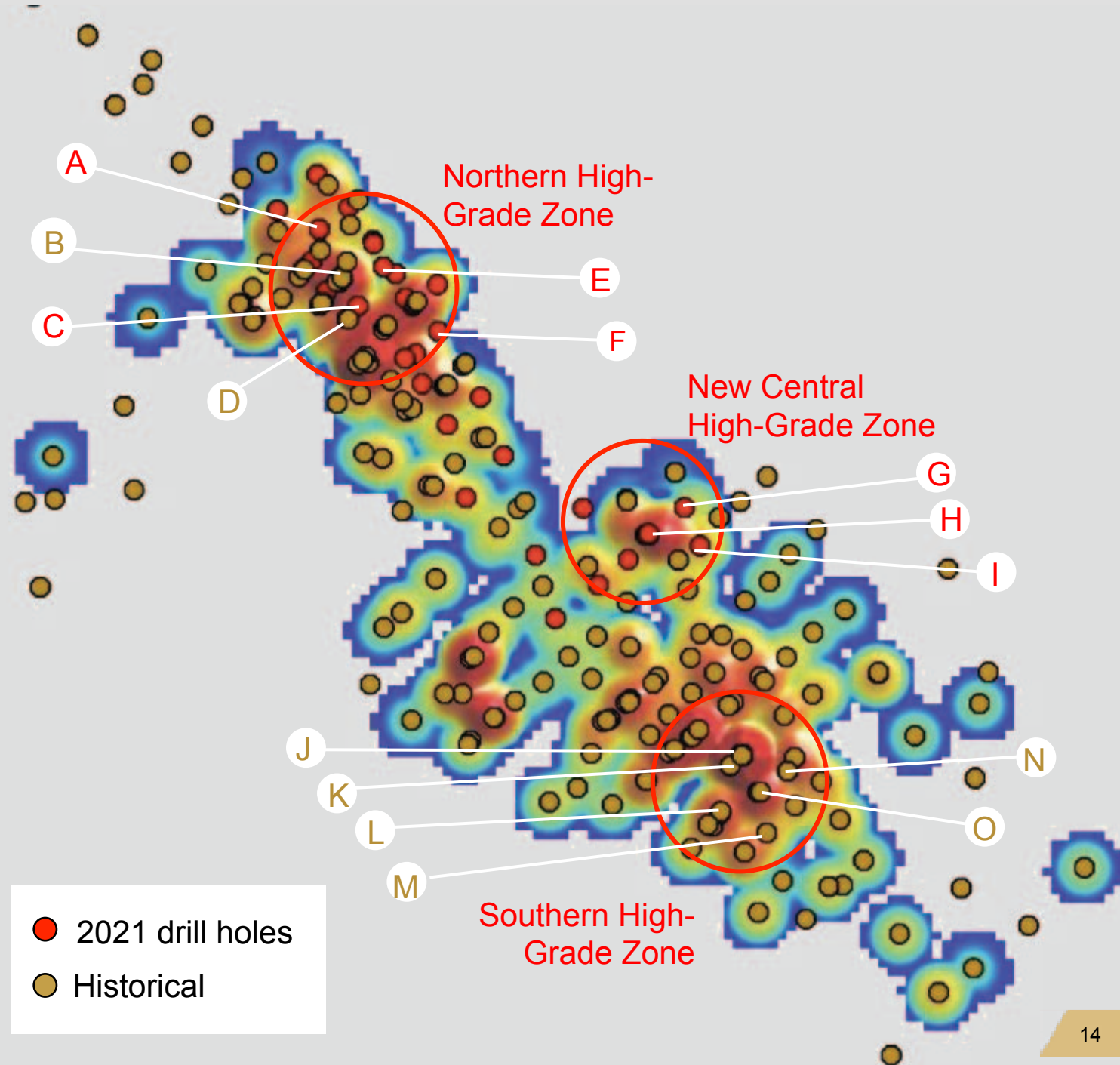
- Focus on Wapolu, Gameta and Oredi Creek
- 38 hole, 3,400m diamond drill campaign completed highlighting new target area outside resource
- Identified scope to increase and expand current resource envelope
- Leveraging results and previous studies to advance production
- Favorable distance and infrastructure between projects allows for simple dig and ship operation
- Easy low-cost barge access and supportive landholders



Fergusson Island

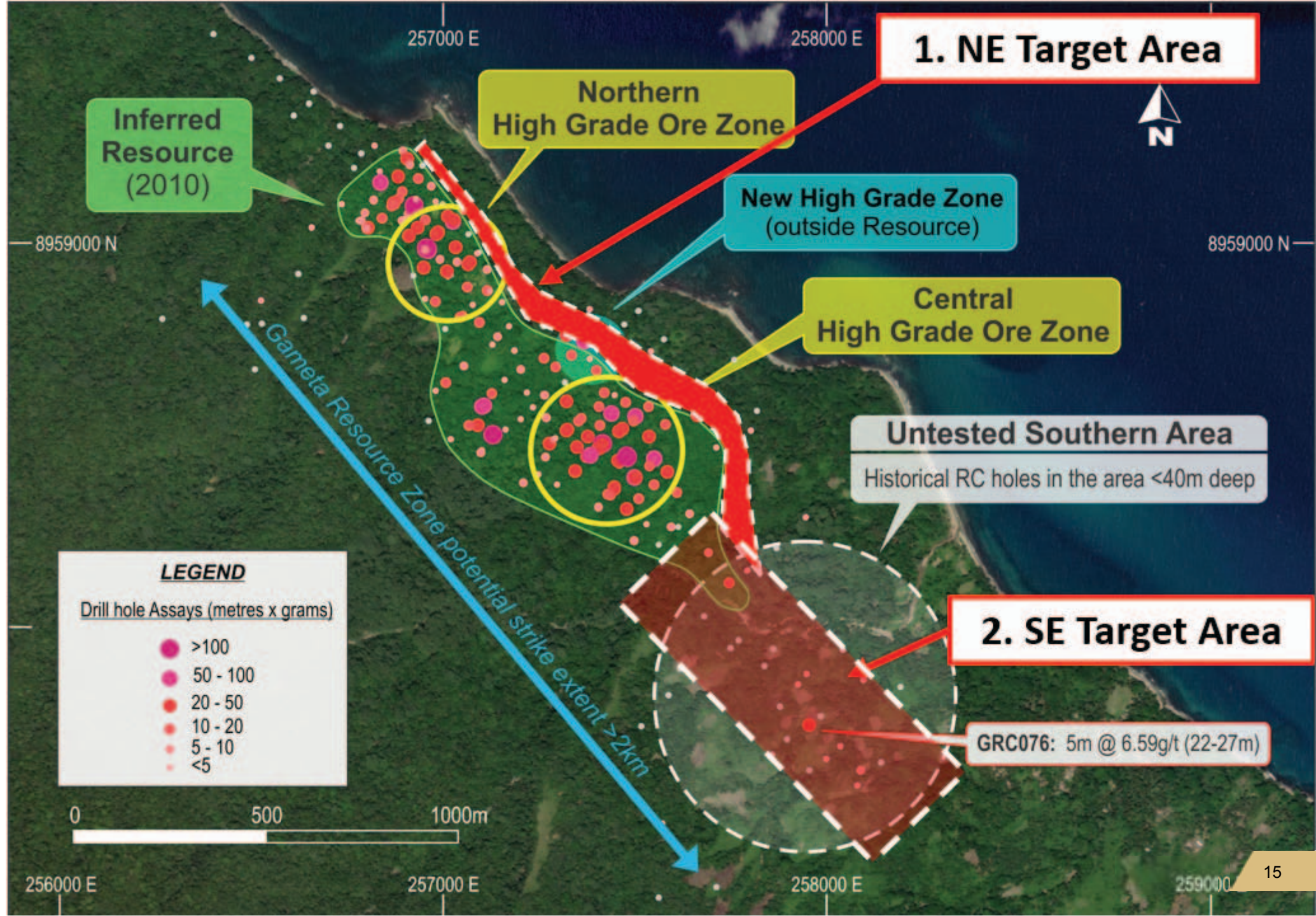
Recent Gameta drilling results show consistent shallow high grade gold intercepts

- A. ADD001: 18.3 @ 2.65g/t inc 5.2m@4.71g/t
- B. GRC037: 34m @ 5.0g/t inc13.2m @ 6.74g/t
- C. ADD002: 27.2m @ 4.38g/t inc 13.2m @6.74g/t
- D. ADD025: 6.0m @ 4.3g/t
- E. ADD006: 18.1m @ 4.88g/t incl 3m@ 14.2g/t
- F. ADD010: 6.2m @ 5.6g/t
- G. ADD038: 9m @ 3.50g/t inc 6.9m @ 4.31g/t & 5.3m @ 2.63g/t
- H. ADD027: 4m @ 2.43g/t & 3.4m @ 2.02g/t
ADD031: 3m @ 2.74g/t
ADD034: 2.3m @ 3.91g/t inc 12m @ 3.79g/t
- I. ADD037: 4.3m @ 3.15g/t
- J. GDH011: 11m @ 3.1g/t
- K. GDH016: 7m @ 5.9g/t
- L. GRC191: 49m @ 3.9g/t
- M. GRC044: 20m @ 3.3g/t
- N. GRC180: 7m @ 4.4g/t
- O. GDH017: 12m @ 4.4g/t



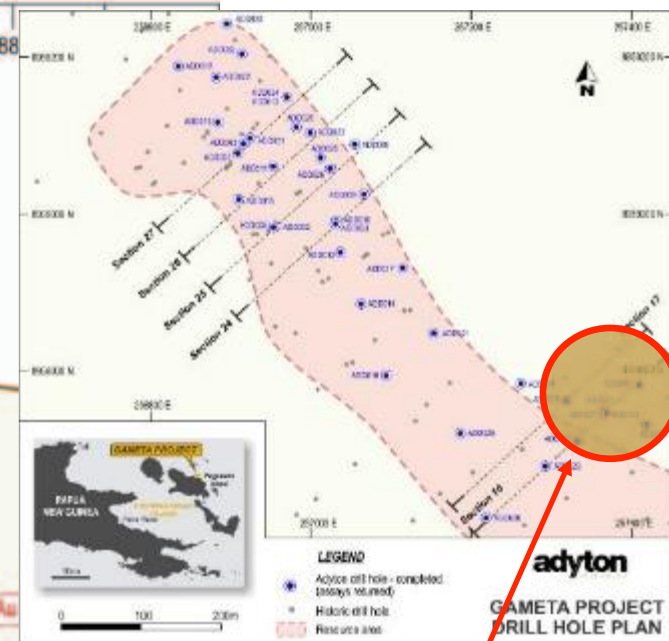
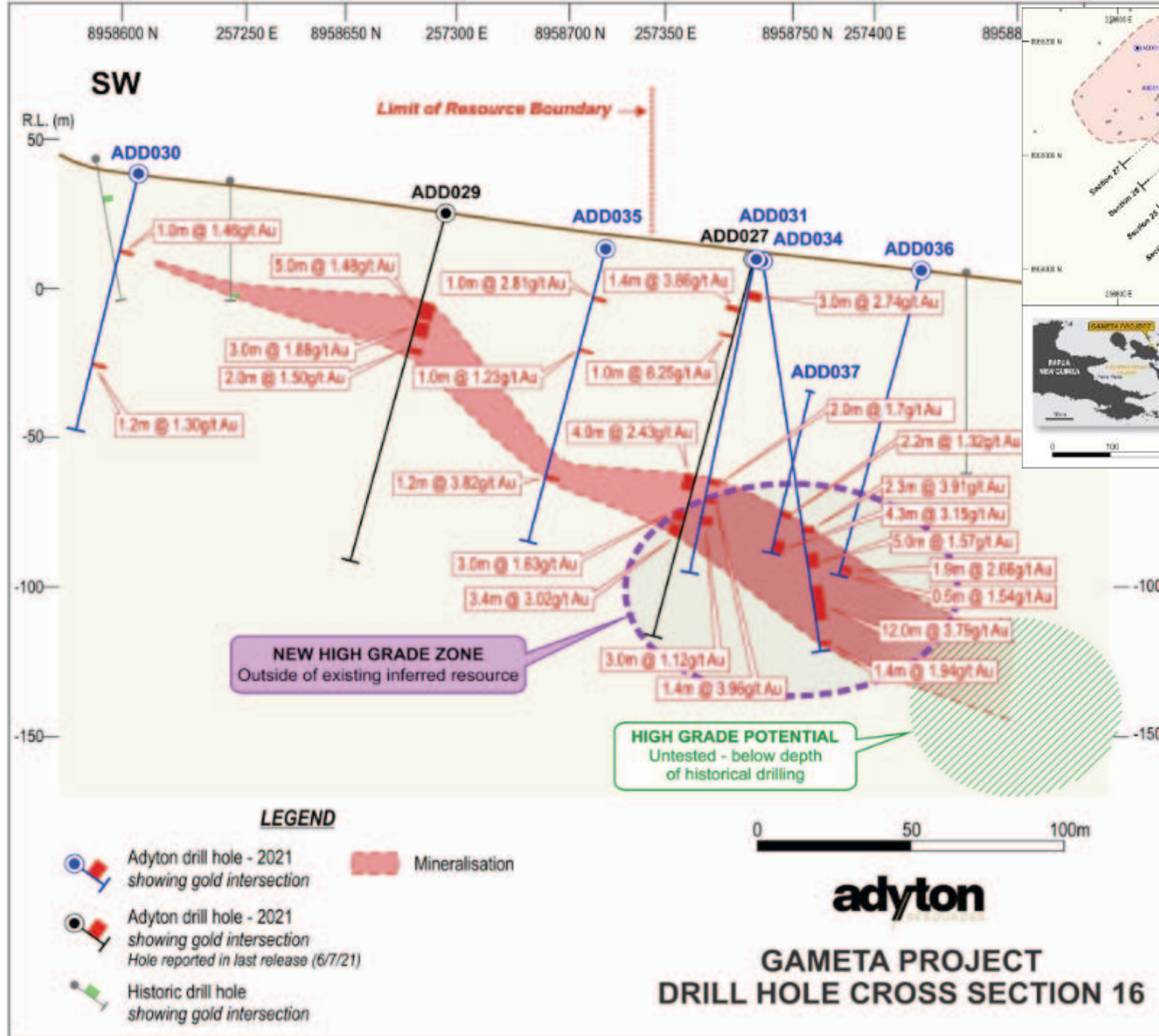
Fergusson Island

Gameta targeting and upside



Fergusson Island

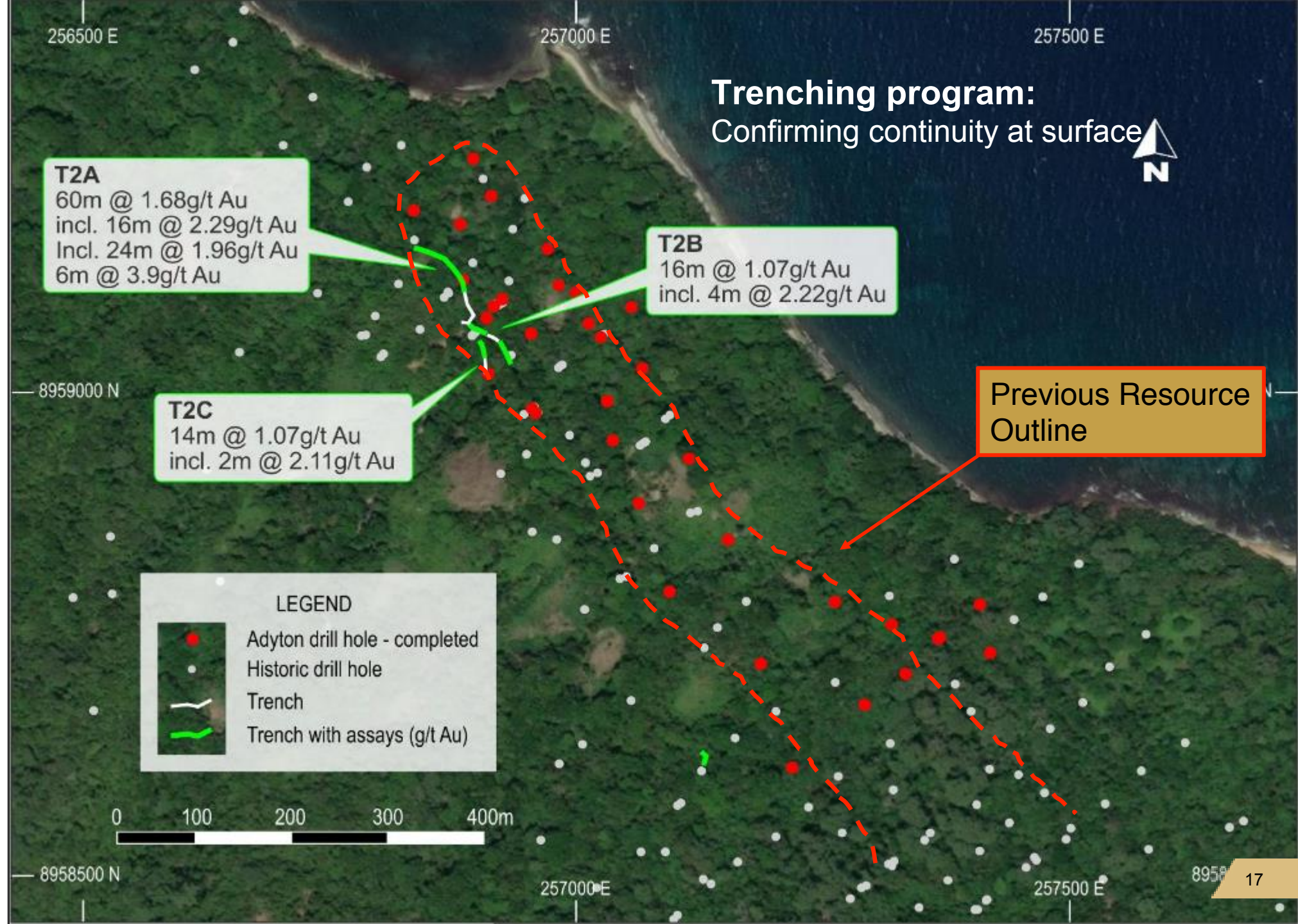
Gameta – new high-grade zone discovery



New
Discovery
Zone XS16

Fergusson Island

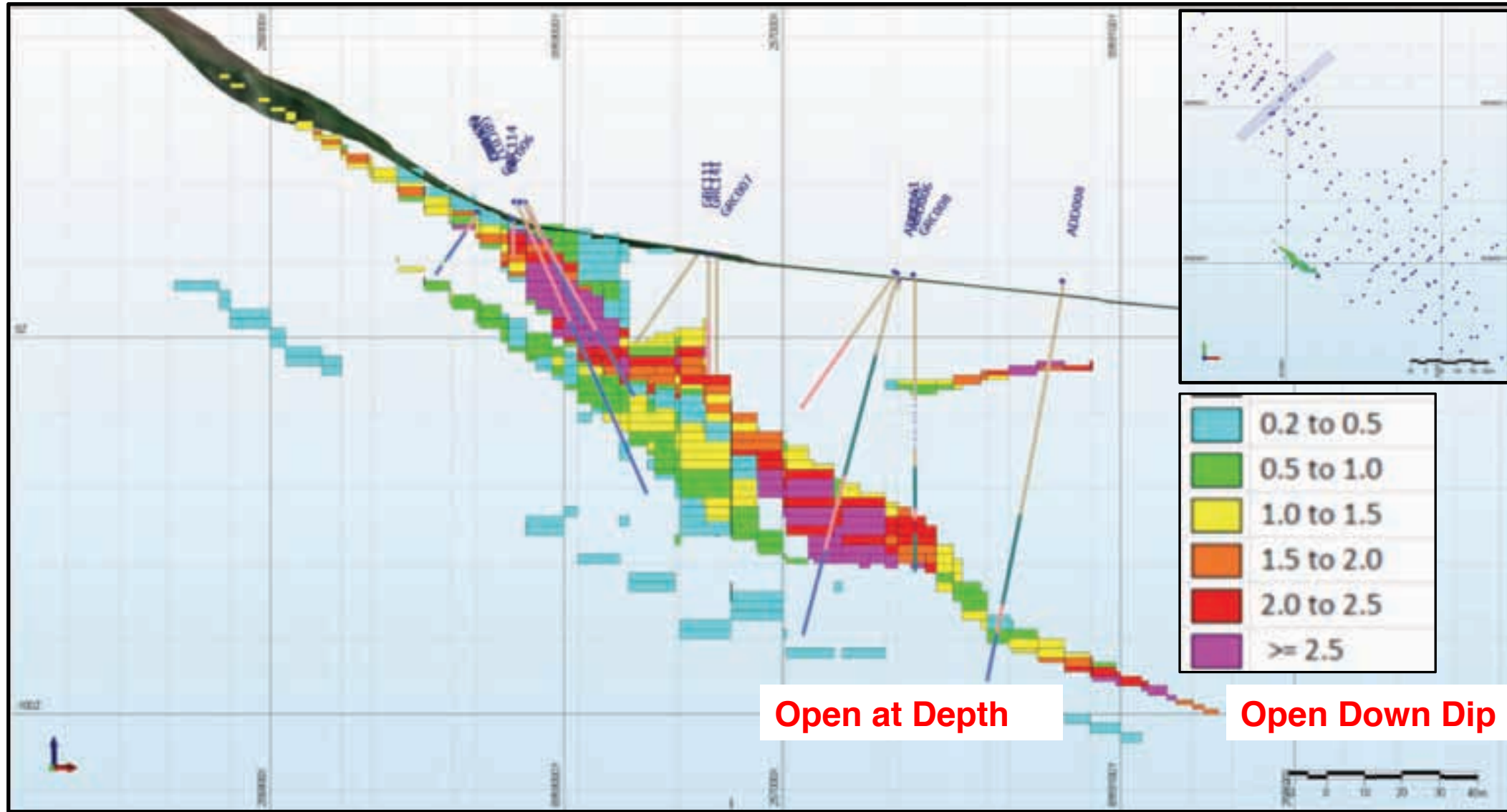
Gameta – trenching results outcropping at surface



Fergusson Island

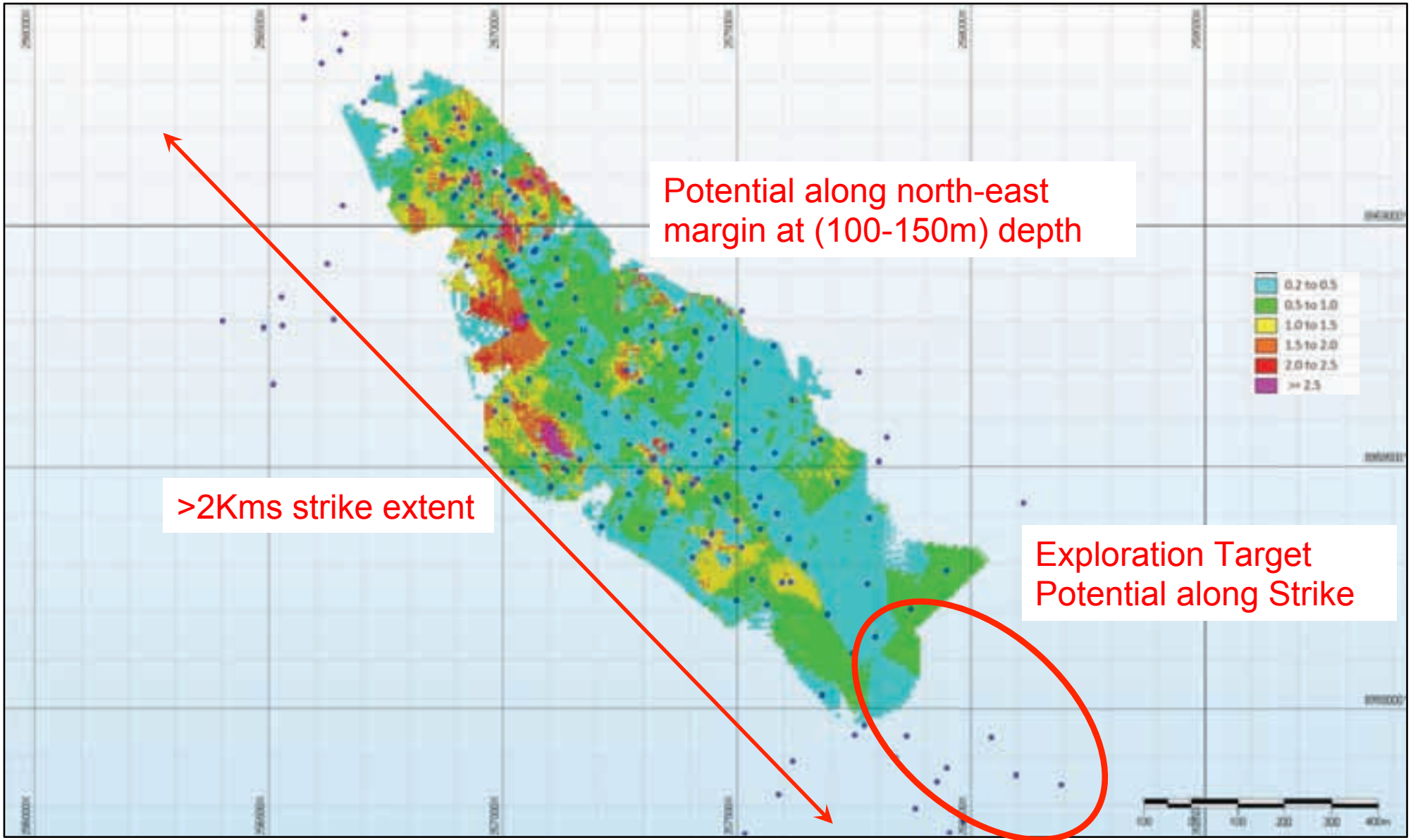
Gameta – Cross Section

New Resource Model



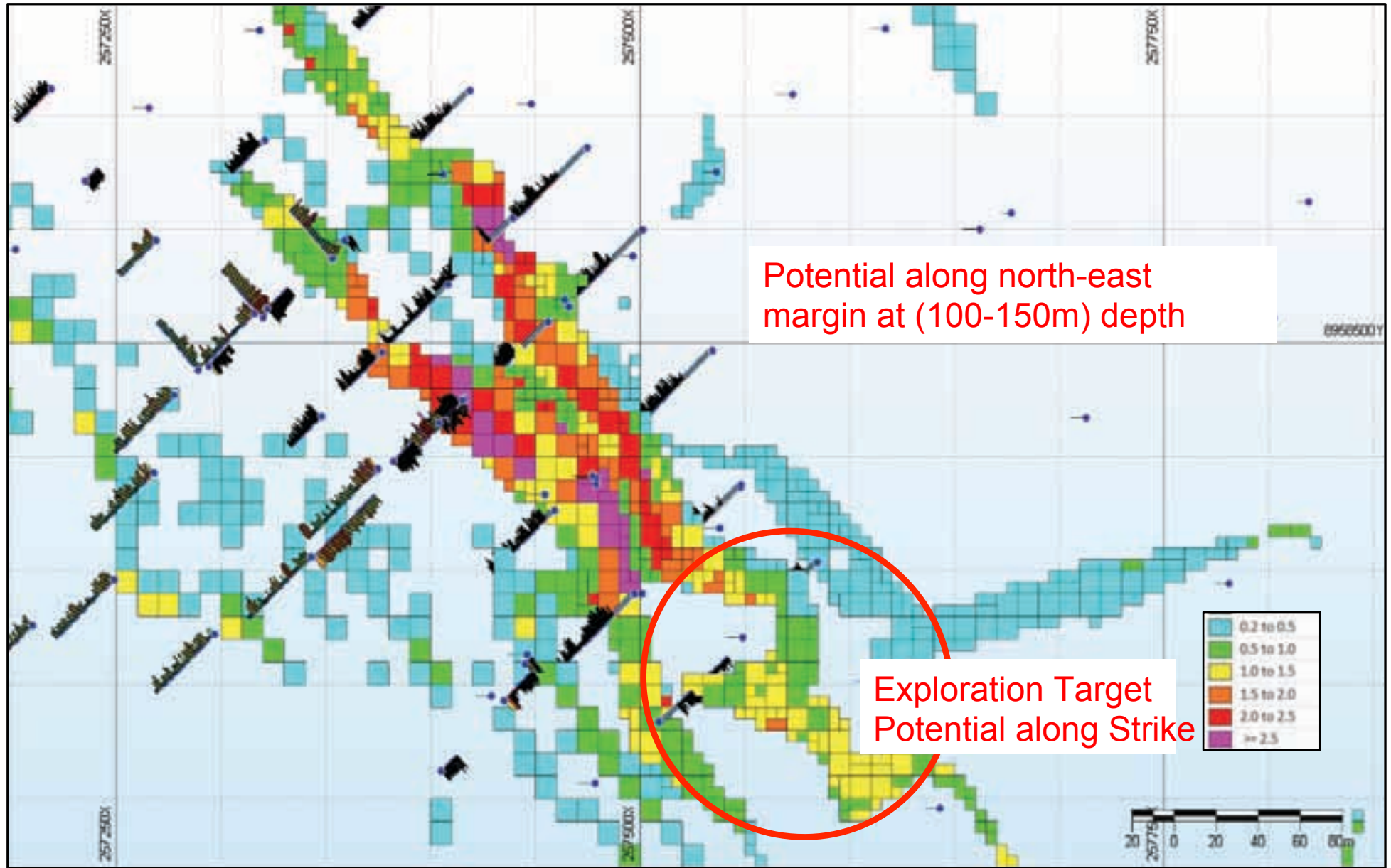
Fergusson Island

Gameta – Cross Section New Resource Model



Fergusson Island

Gameta – New Resource Model Plan View (RL -20m)

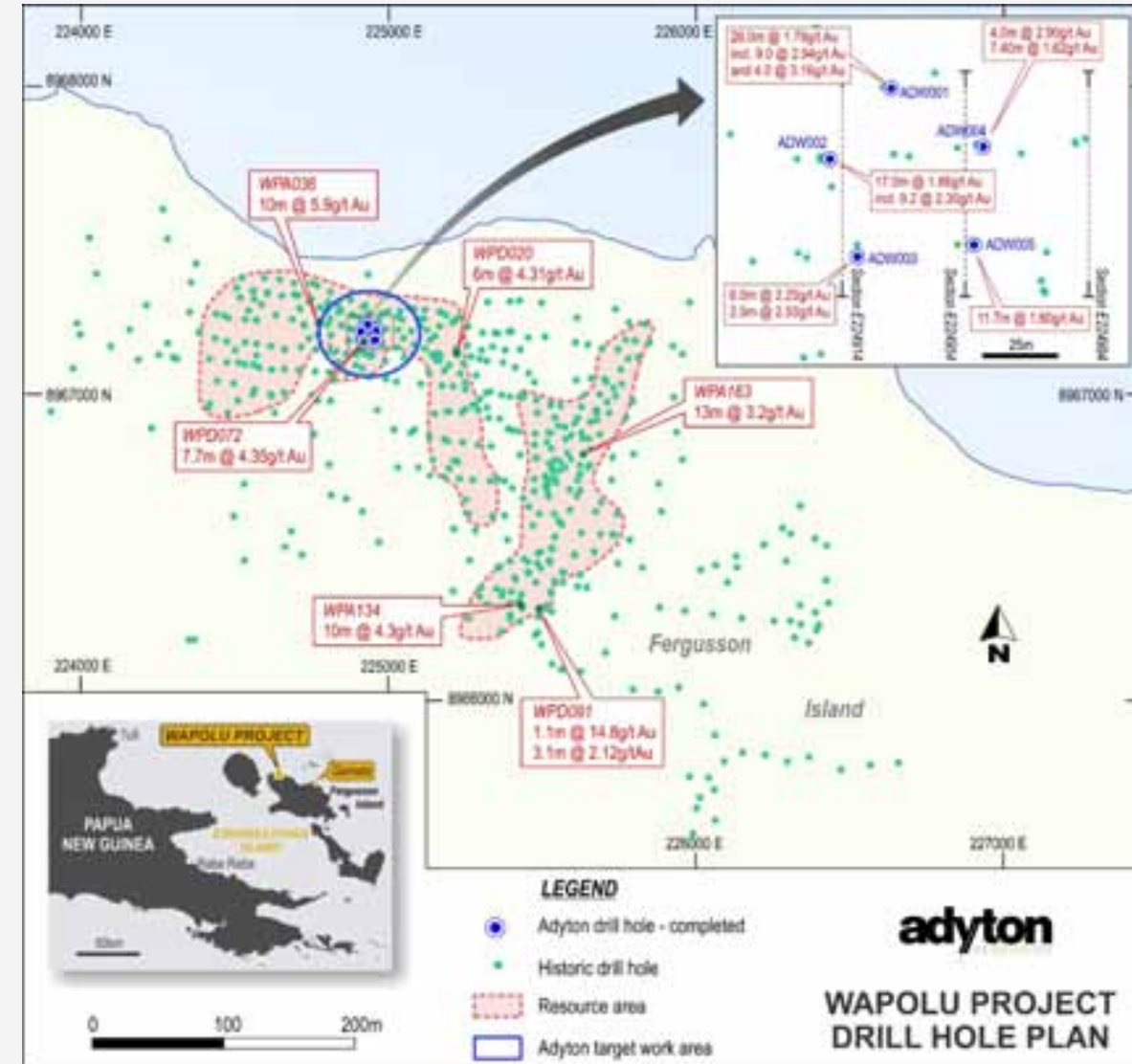


Fergusson Island

Wapolu

Gameta sister deposit

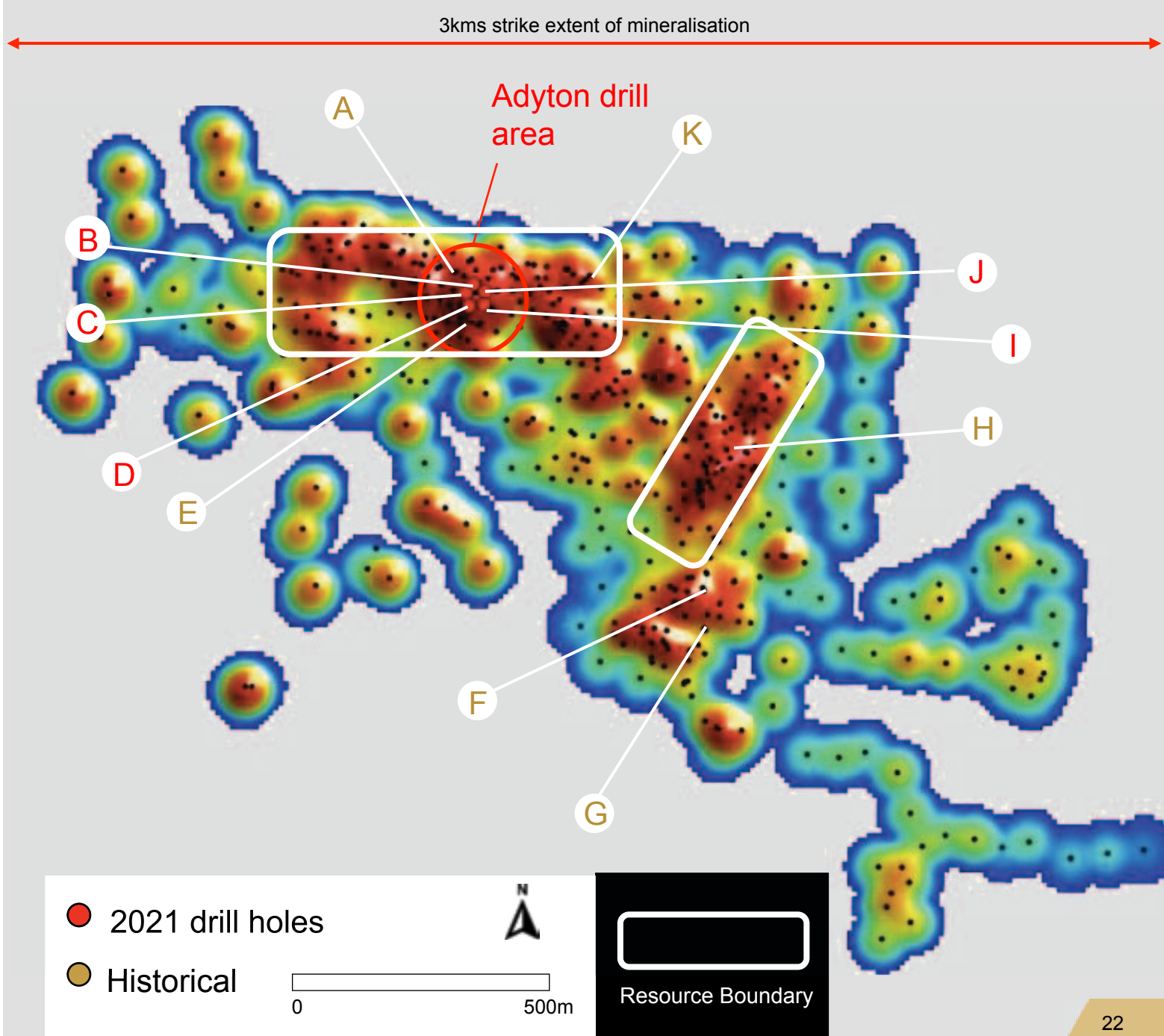
- 30kms from Gameta – **potential to combine resources** and execute dig and ship operations
- Wapolu deposit consists of **5.8m tonnes at an average grade of 1.06 g/t Au**, for **contained Inferred Resource of 200,000oz Au (Oct 2021)**.
- Historical exploration and drilling - large number of shallow holes drilled (late 1980's / early 1990's)
- **Limited trial mining** (1995 to 1997)
- Limited 400m **diamond coring program completed (August 21)**
- Samples for confirmation of historical drilling and metallurgical testing
- Results confirming shallow ore zones - early start-up potential



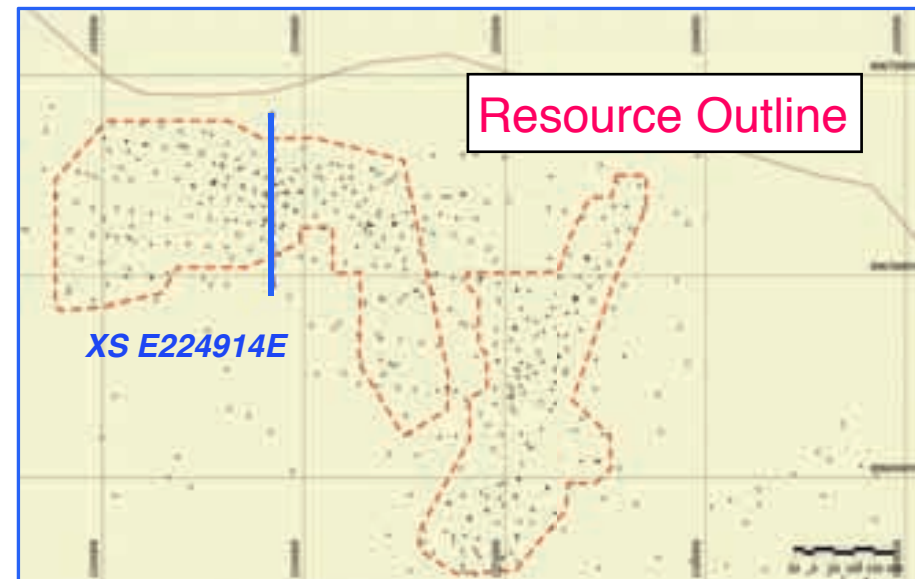
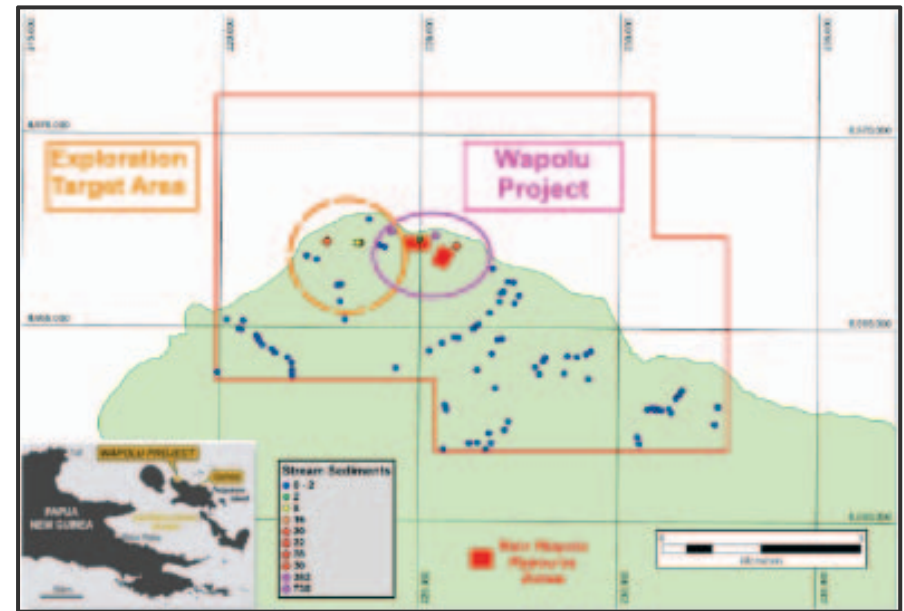
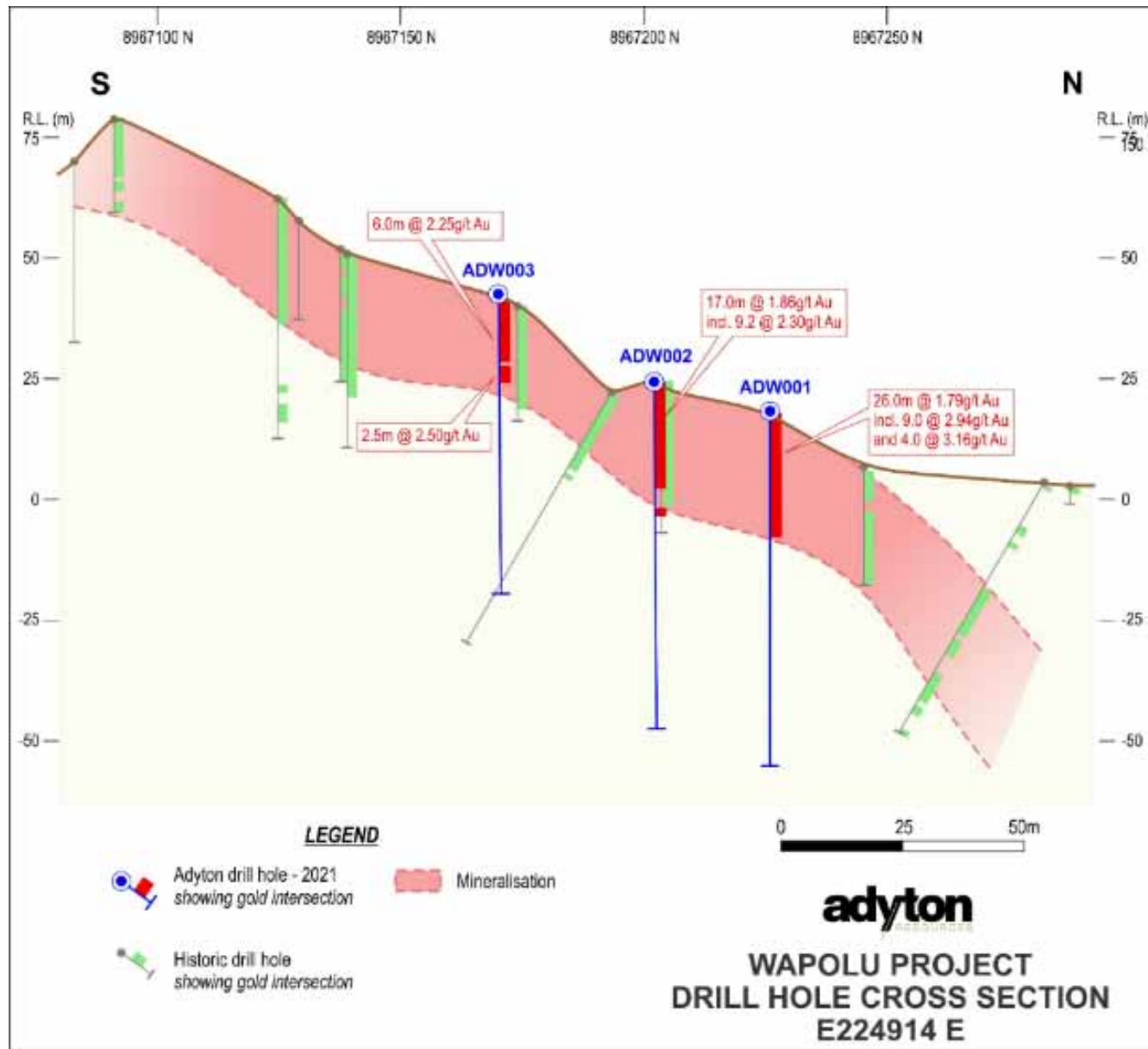
Fergusson Island

Like Gameta Wapolu drilling showed consistent shallow high grade gold intercepts

- A. WPA036: 10m @ 5.9g/t
- B. ADW001: 26m @ 1.79g/t inc 9m @ 2.94g/t
- C. ADW002: 17m @ 1.86g/t
- D. ADD003: 6.0m @ 2.25g/t & 2.5m @ 2.50g/t
- E. WPC072: 7.7m @ 4.35g/t
- F. WPA134: 19m @ 4.3g/t
- G. WPD091: 1.1m @ 14.8g/t & 3.1m @ 2.12g/t
- H. WPA163: 13m @ 3.2g/t
- I. ADW005: 11.7m @ 1.60 g/t
- J. ADW004: 4m @ 2.91g/t & 7.4m @ 1.62g/t
- K. WPD020: 6m @ 4.31g/t

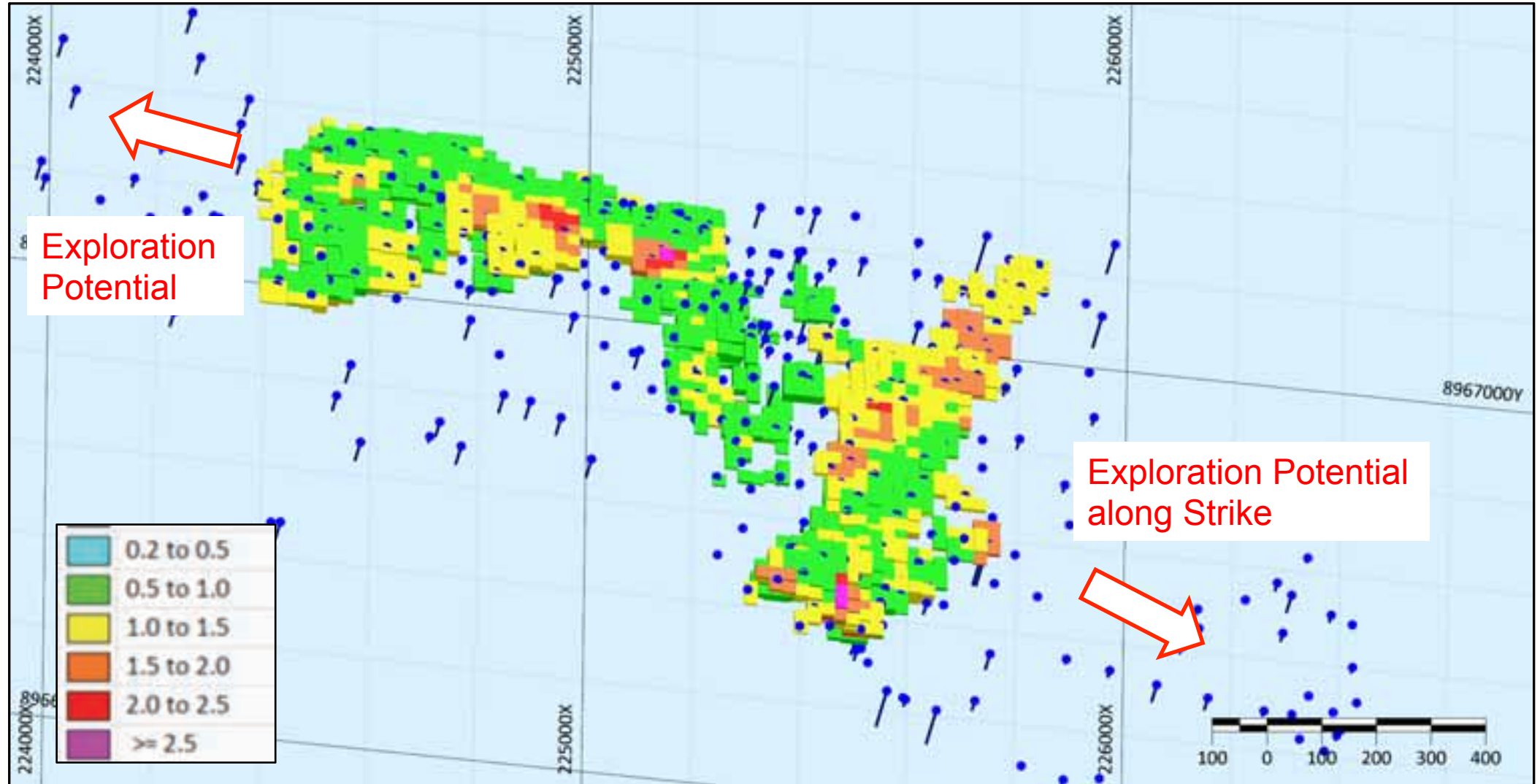


Fergusson Island Wapulu drilling results



Fergusson Island

Wapolu Resource Model –Plan view



Adyton Resources

Developing world-class copper and gold projects in PNG's tier one Pacific Ring of Fire

Feni Island World class copper intersect

Massive sulphide Cu + Au Zone:

- 6.4m (149.7 to 156.1m) @ 5.1% Cu & 1.6g/t Au
 Incl: 3.6m (151.5 to 155.1m) @ 6.9% Cu & 2.1g/t Au
 Incl: 0.7m (154.4 to 155.1m) @ 14.5% Cu & 2.4g/t Au

Disseminated Cu + Au Zone:

- 35.9m (70.7 to 106.6m) @ 0.3% Cu & 1.1g/t Au

Gold Resource summary

Feni Island

1,460koz Au

Inferred Mineral Resource*

Inferred
Resource
+123%^

Fergusson Island

Gameta

175koz Au

Indicated Mineral Resource*

340koz Au

Inferred Mineral Resource*

Wapolu

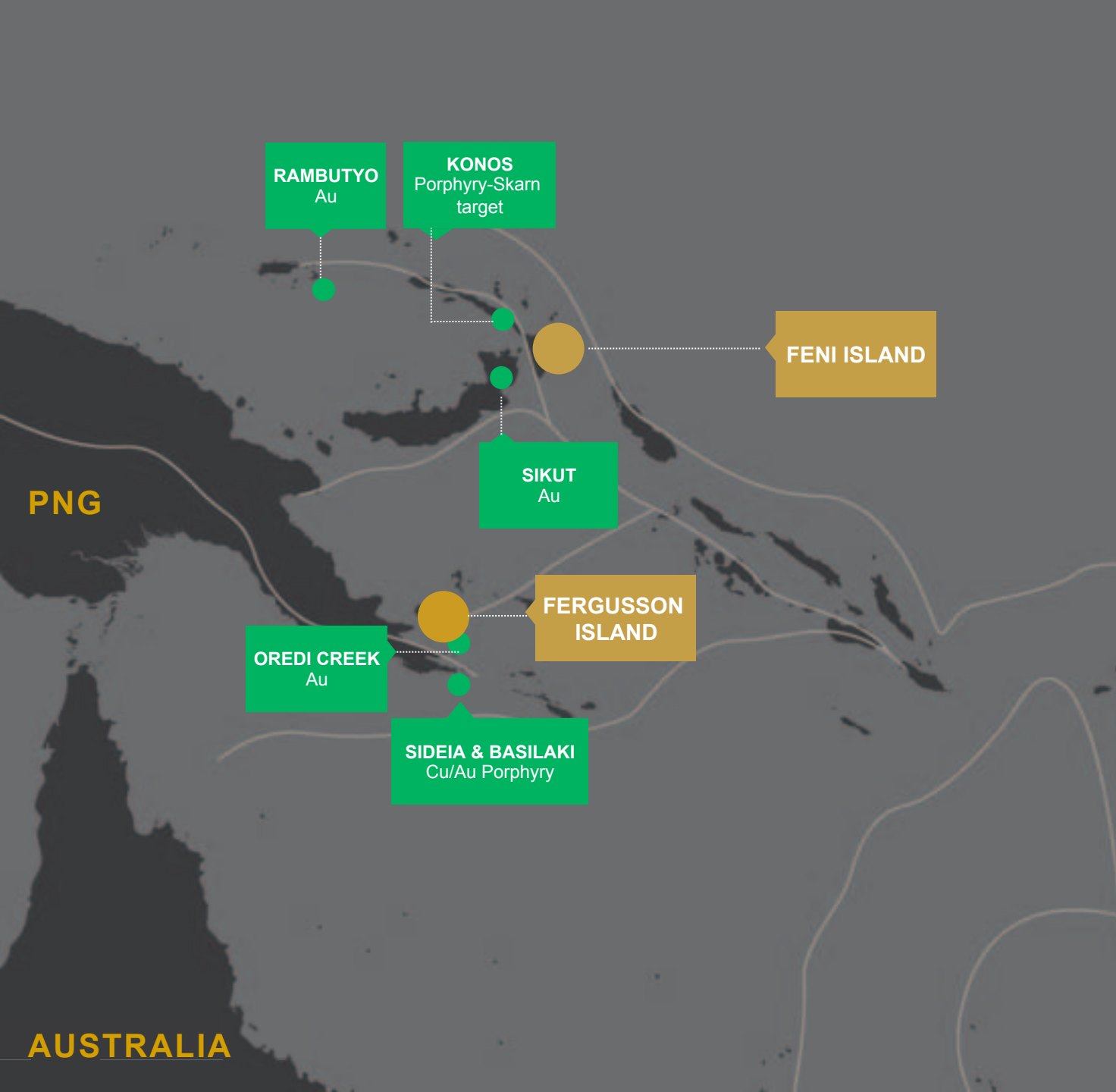
200koz Au

Inferred Mineral Resource*

Inferred
Resource
+33%^

*Cut off 0.5g/t

^Post drilling Sept 2021



Project pipeline

SIKUT

Vein hosted Au with Cu porphyry potential, along strike from Wild Dog mine

SIDEIA & BASILAKI

Sideia: Numerous Cu showings, no systematic exploration
Basilaki: Potential for deeper porphyry Cu/Au

OREDI

The large structural zone is a target for bonanza – style epithermal gold mineralisation

KONOS

Conceptual Cu/Au porphyry and skarn target

RAMBUTYO

Anomalous Au was detected in a stream sediment sample of 1,070ppb

PNG – A favourable operating jurisdiction

PNG is a favorable operating jurisdiction:

- Strong and successful track record of developing world class Mineral Resource projects
- Continued large oil, gas, infrastructure, agriculture and resource investments
- Centralized government with a Westminster system of parliamentary democracy
- Well-regulated mining industry administered by the Mineral Resources Authority (MRA) in Port Moresby
- Infrastructure continuing to develop with ample services and suppliers
- Strong G to G relationship with Australia

Thank you

Adyton Resources Limited

T: +61 2 3854 2389

E: info@adytonresources.com.au

W: www.adytonresources.com

Level 14, 167 Eagle Street
Brisbane, QLD 4000 Australia

PO Box 5807
Brisbane, QLD 4000



Appendix 1: Board & Management

Sinton Spence – Chairman(PNG)

Mr. Sinton Spence is a Chartered Accountant based in Port Moresby, Papua New Guinea, and the Principal of Sinton Spence Chartered Accountants, PNG's largest independent accounting firm. In 2006, he was awarded an MBE by the Queen for services to Papua New Guinea commerce and the community. He has had extensive experience in company practice in PNG and is an experienced company director. He has held positions as a director of Sierra Mining and also Shell Oil Exploration and Production PNG Ltd.

Tim Crossley – Managing Director (Australia)

Mr. Tim Crossley has extensive experience as a director and mining executive, having operated some of Australia's largest mining businesses including roles as Deputy CEO of ASX-listed Gloucester Coal, and President and Chief Operating Officer (COO) at BHP Billiton's West Australian Iron Ore business. Tim is also an executive director of Mayur Resources Ltd the largest shareholder in Adyton.

David Irvine – Independent Non-Executive Director

David is an experienced corporate strategy and business improvement expert with more than two decades of experience providing innovative solutions to large, complex projects and organisations around the world. David began his professional career in the early 90's as a Mechanical Engineer with BHP where he gained valuable management, logistics, operations and marketing experience, before taking a senior executive role at Dawson Consulting, a specialist management consulting organization.

David is currently the Chief Executive of Brisbane based Siecap Project Management and Advisory Group.

Rod Watt – Chief Geologist (Australia)

Mr. Rod Watt is a highly experienced Geologist with over 30 years experience in both major (Anglo American and Western Mining Corp) and junior resource companies. He has substantial experience within the Pacific Rim.

Stephen Kelly – CFO & Co Sec (Australia)

Mr. Stephen Kelly is an experienced Chartered Accountant with many years overseeing mining companies across the ASX, TSX, LSE markets. He is also Company Secretary to various global mining companies.

Appendix 2: ESG Principles

Focused on sustainable development & building a future for all

Targeting Zero/Neutral Emissions

Contributing to PNG Nation Building

Two-Way Stakeholder Engagement

- In Country
- Capital market

Developing Sustainable Projects

Building Long Lasting Community Partnerships

- Grass roots to Government

Reputable Counterparts

- Suppliers
- Service providers

Appendix 3: Resource Estimates using various cut-off criteria

Gameta – Grade Tonnage Table

Cut-off Criterion (g/t Au)	Indicated Resource			Inferred Resource		
	Tonnes (Mt)	Gold grade (g/t)	Contained Gold (koz)	Tonnes (Mt)	Gold grade (g/t)	Contained Gold (koz)
0.3	4.5	1.24	179	16.9	0.78	423
0.4	4.3	1.29	178	13.1	0.9	379
0.5	4.0	1.33	173	10.5	1.01	340
0.6	3.8	1.39	168	8.5	1.12	305
0.7	3.4	1.46	162	7.0	1.22	274
0.8	3.1	1.54	154	5.8	1.32	245
0.9	2.8	1.63	145	4.8	1.42	219
1.0	2.5	1.71	135	4.0	1.51	195

Wapolu – Grade Tonnage Table

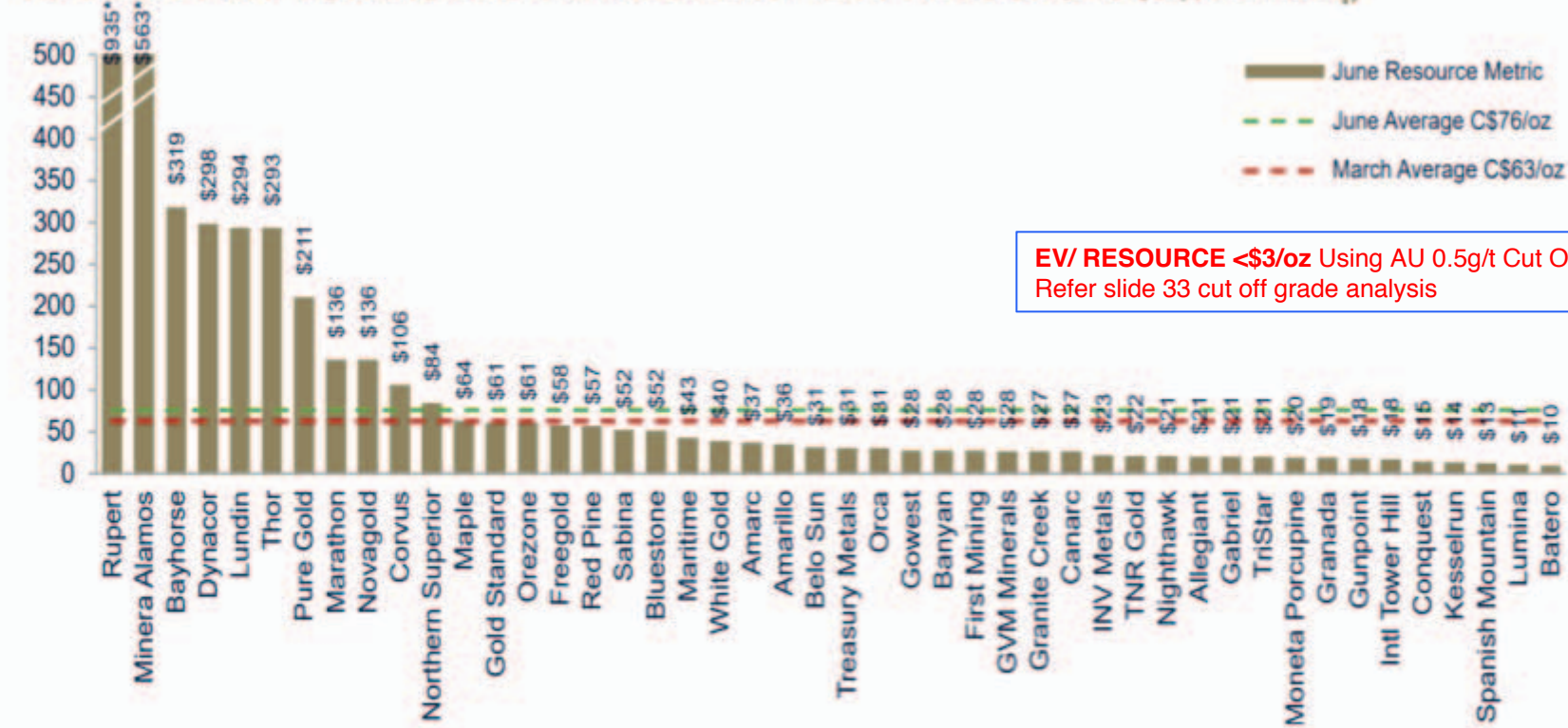
Cut-off Criterion (g/t Au)	Inferred Resource		
	Tonnes (Mt)	Gold grade (g/t)	Contained Gold (koz)
0.3	9.3	0.81	240
0.4	7.3	0.93	220
0.5	5.8	1.06	200
0.6	4.7	1.18	180
0.7	3.8	1.3	160
0.8	3.1	1.42	140
0.9	2.6	1.55	125
1.0	2.1	1.67	115

Feni – Kabang Grade Tonnage

Cut-off Criterion (g/t Au)	Inferred Resource		
	Tonnes (Mt)	Gold grade (g/t)	Contained Gold (koz)
0.3	104.2	0.6	2,000
0.4	78.4	0.68	1,710
0.5	60.4	0.75	1,460
0.6	40.9	0.85	1,100
0.7	28.2	0.94	850
0.8	19.9	1.01	650
0.9	11.0	1.14	400
1.0	6.7	1.27	270

Appendix 4: Peer comparison

TSX/TSX-V EXPLORERS AND DEVELOPERS – EV / RESOURCES (C\$/oz AuEq)



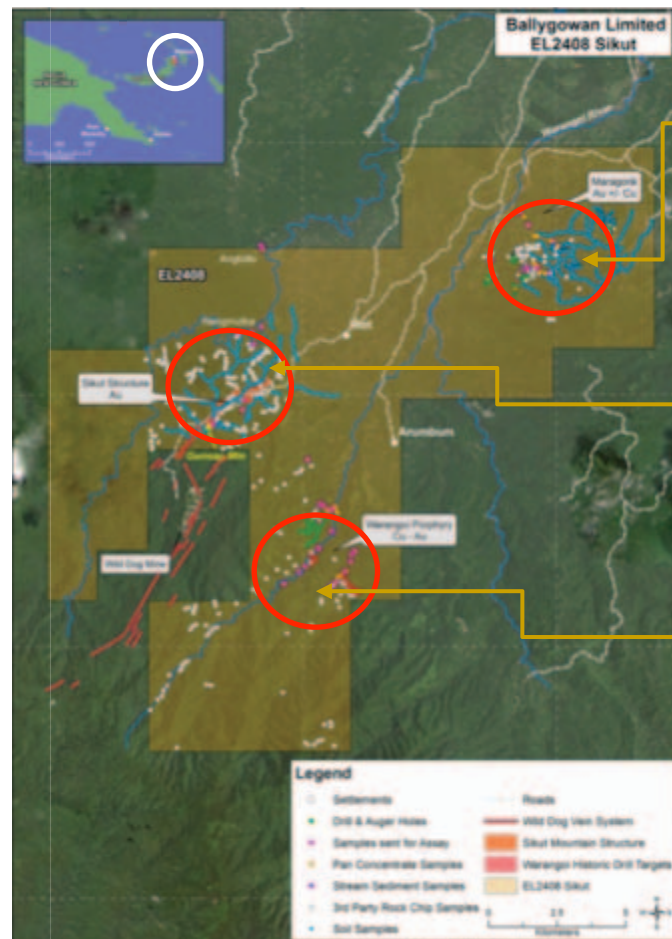
EV/ RESOURCE <\$3/oz Using AU 0.5g/t Cut Off Grade
Refer slide 33 cut off grade analysis

*Not to scale.

Source PCF Capital 06/21 Thermometer Report

Appendix 5: Sikut Project

‘Vein hosted Au with
Cu porphyry potential’
‘Along strike from Wild
Dog Mine’



THREE MAIN PROSPECTS

Maragorik Gold Prospects:

- Three high sulphidation Au / Cu prospects – trenching grades of up to 21m @ 2.1g/t Au
- Limited drilling in the early 1990's (12 holes)

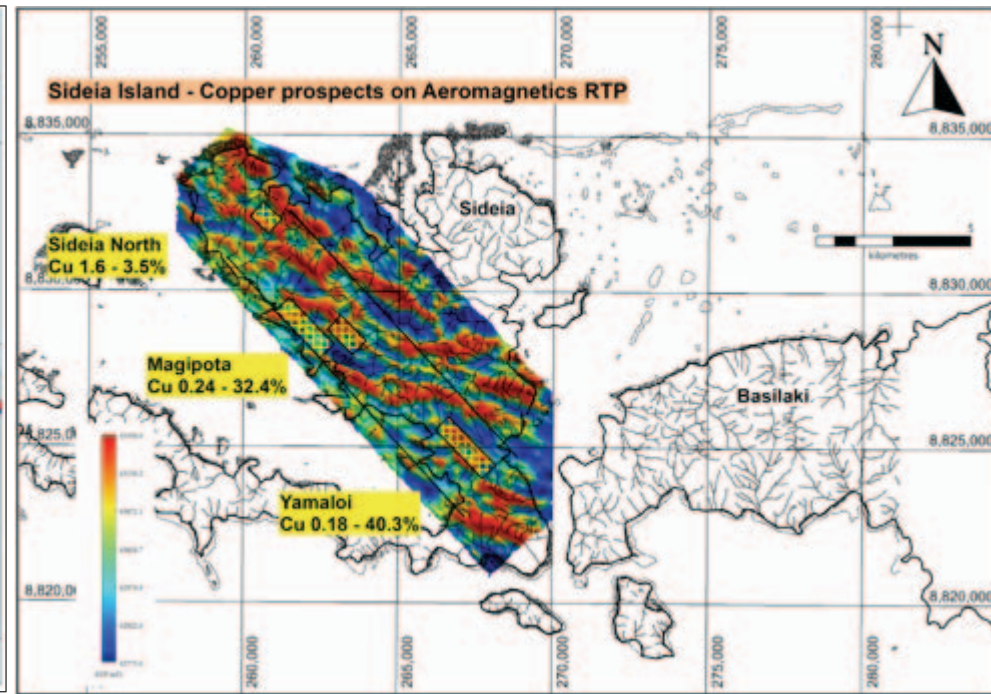
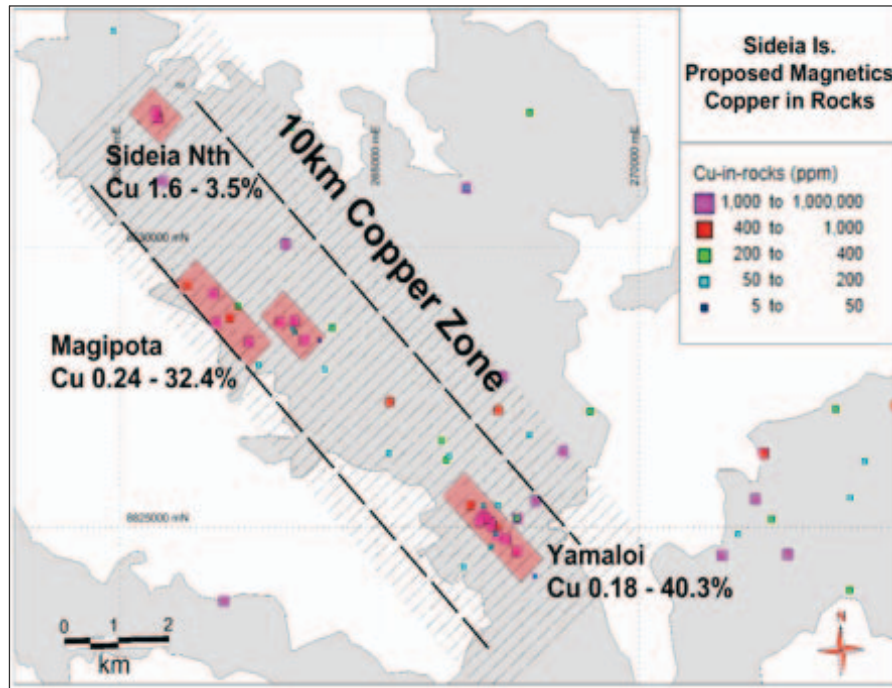
Gunsnap Gold Prospect:

- 4km zone of hydrothermal alteration along strike of the Wild Dog gold deposit
- Never been drilled

Warangoi Porphyry Copper-Gold Prospect:

- Float and chip samples of up to 10.8% Cu & 11.2g/t Au within a 6km² diorite intrusion
- Drill targets were identified in the 1980's but have yet to be drilled

Appendix 6: Sideia



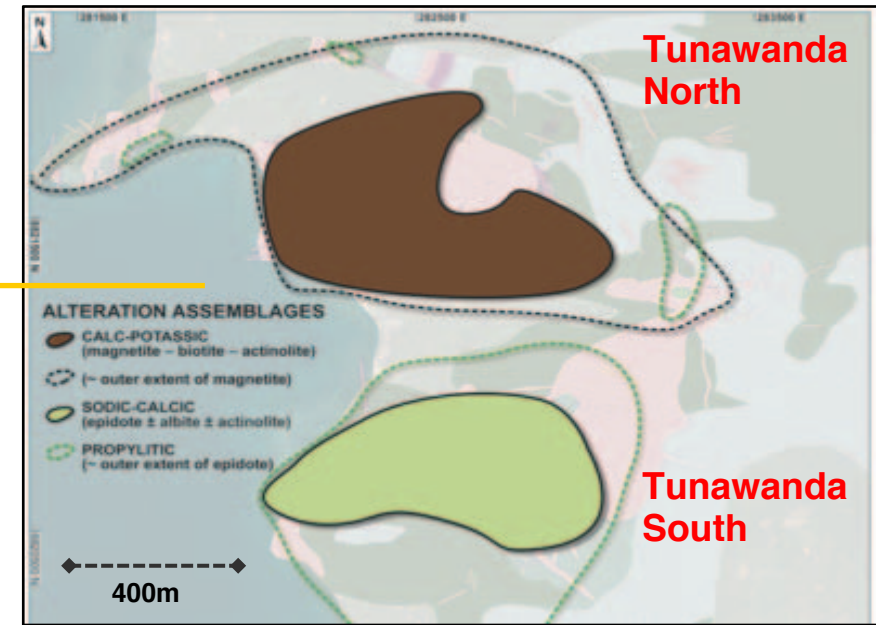
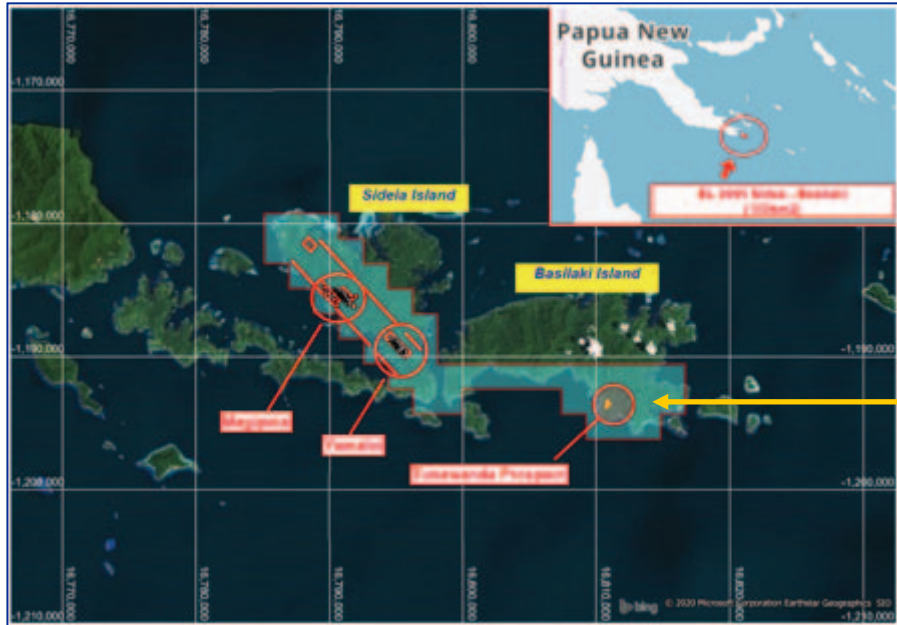
LOCATED ALONG PAPUAN FOLD BELT

'NO SYSTEMATIC MODERN EXPLORATION CARRIED OUT'

'POTENTIAL FOR DEEPER PORPHYRY CU + AU'

- Rock chips with up to 27.5% Cu and 3.92 g/t Au and historical results of 239 g/t Au and 40% Cu
- An aeromagnetic and radiometric survey completed in 2018 designed to identify new prospects and drill targets and map out the major structures
- Regional infill stream sediment sampling program on the island completed, follow up required

Appendix 7: Basilaki



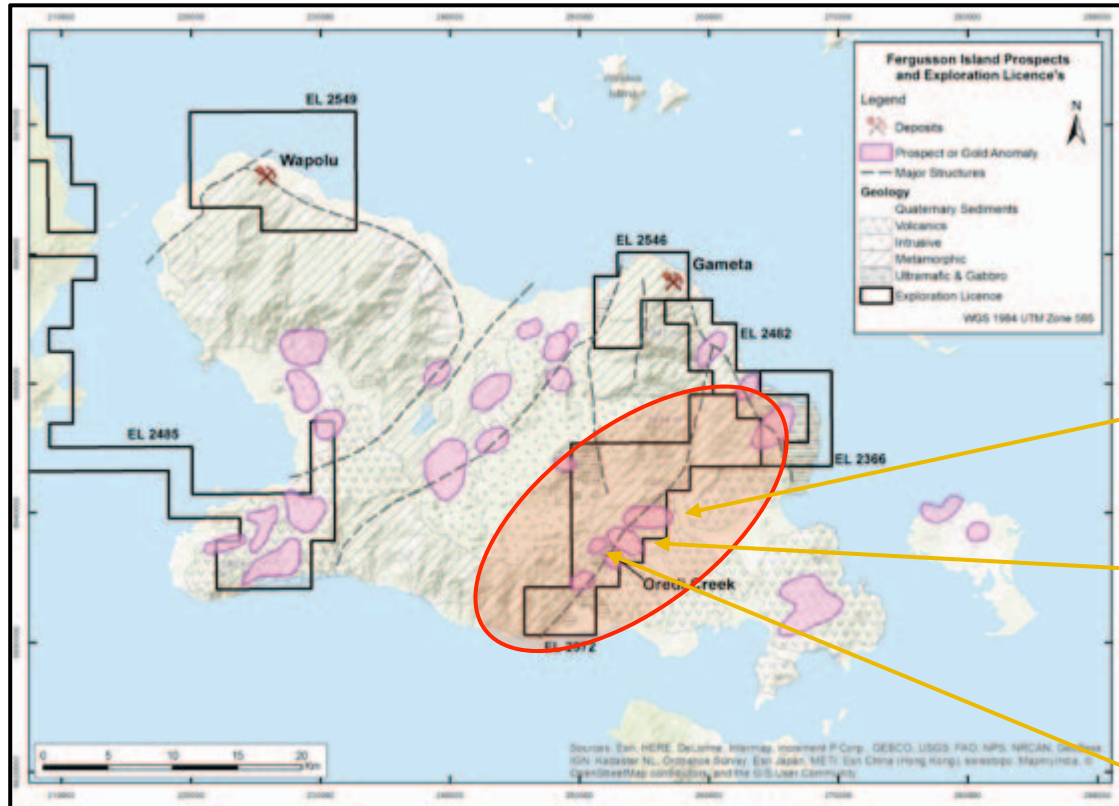
Tunawanda Prospect

Two distinct areas of hydrothermal alteration:

- North – deeper porphyry Cu target (>300m)
- South – shallower epithermal Au target (to 300m)

- Alkaline mineral system with excellent geochemistry, similar to Cadia and Nth Parkes
- 2018 drilling program, 5 holes intersected alteration typical of the propylitic (outer) zone of a porphyry copper system (northern zone)
- 3 holes intersected indications of a high-level Au epithermal system (southern zone)

Appendix 8: Oredi Creek



‘STRUCTURAL SHEAR ZONE WITH POTENTIAL FOR HIGH GRADE BONANZA STYLE EPITHERMAL AU

- Gold mineralisation and associated widespread epithermal alteration is focused along the Oredi Fault Zone
- Only three shallow drill holes drilled

GOMWABILA

“structural controlled Au veins”; 1.4g/t rock chip; 0.5g/t pan cons

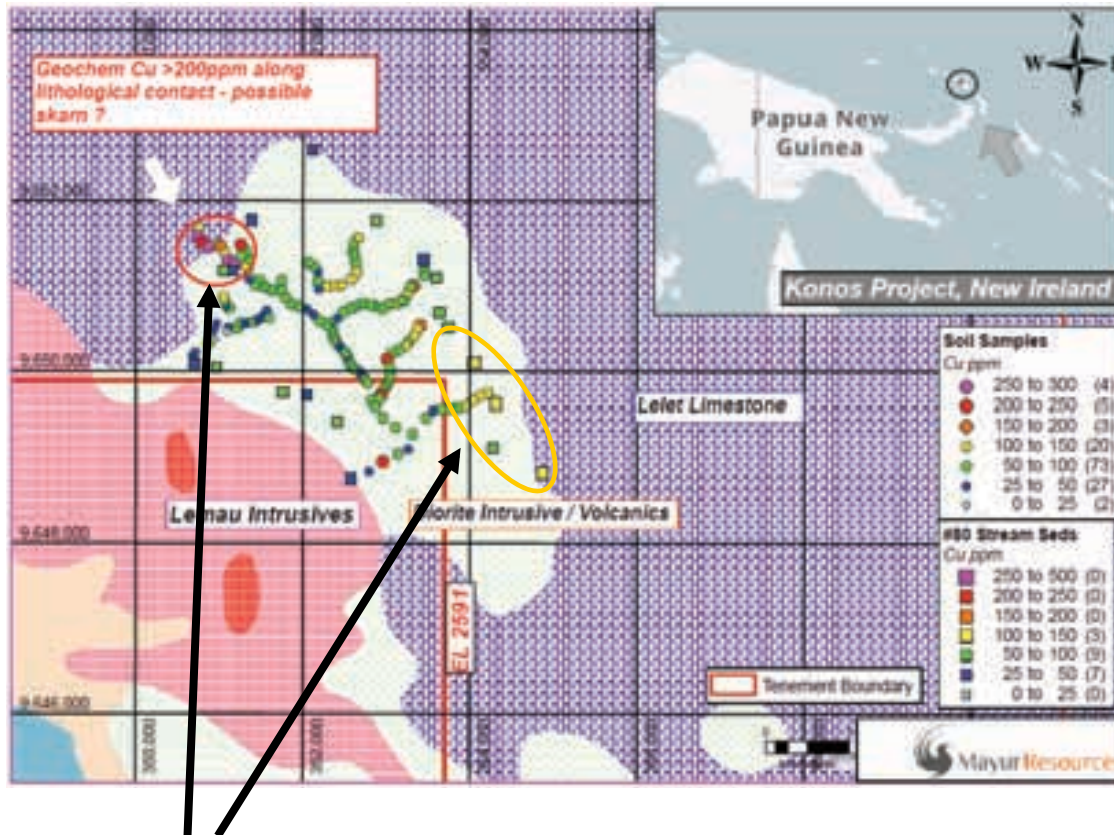
OREDI

“ORD001 testing structurally controlled Au 70m @ 0.50g/t Au; *incl selected intervals >1g/t and a high of 3.32m g/t Au over 1.3m.*”

MAMBOMABONA

“15 – 20m wide shear zone, silicified with rock chip sampling up to 200g/t Au; channel and floats 0.2g/t Au”

Appendix 9: Konos



Q4 2019 RESULTS:

Two copper / gold geochemical anomalies that require following up on the ground, along with an area of clay and 3km² potassic alteration that has been identified



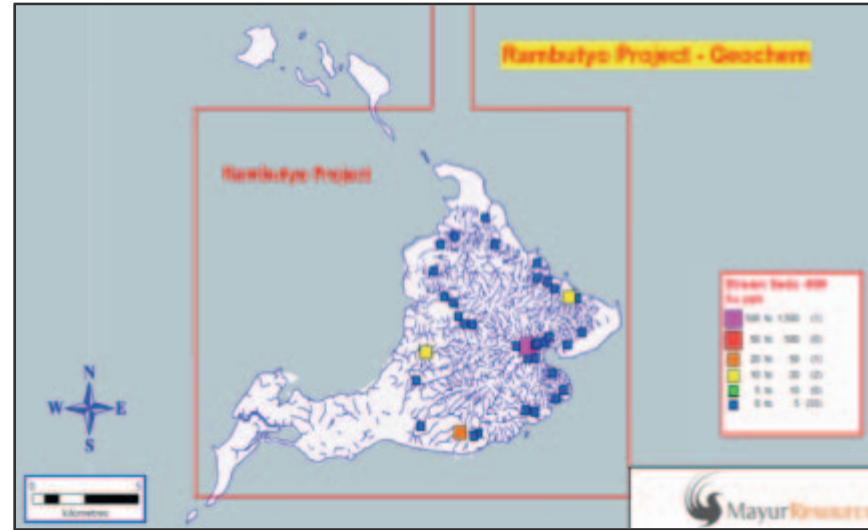
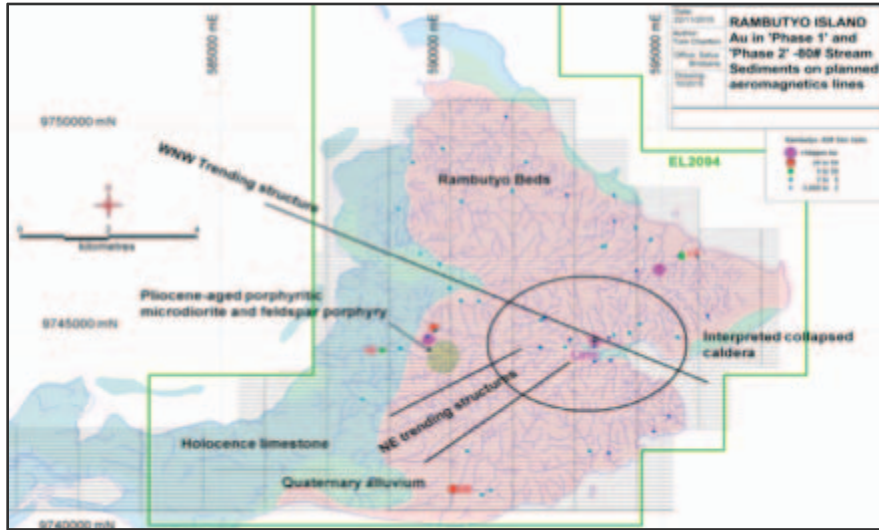
CU + AU PORPHYRY & SKARN TARGET

- New Ireland is prospective for porphyry Cu/Au Deposits
- Conceptual Target – little previous fieldwork has been carried out over the area
- A limited Geochem sampling program was carried out Q4 2019 to identify the area of interest
 - 19 BLEG
 - 19 Pancon
 - 133 Soils -80#
 - 19 Rock Chip / Float

NEXT STAGE EXPLORATION:

- Geological mapping
- Geochem sampling
- Ground geophysics

Appendix 10: Rambutyo



COLLAPSED CALDERA GEOLOGIC SETTING TYPICAL OF MAJOR AU CU DEPOSITS IN PNG

- A highly altered porphyry intrusive is confirmed to exist in the centre of the island
- Late Miocene to Pliocene-aged intrusive porphyries are typically associated with major porphyry Cu / Au deposits in PNG
- Gold anomalism was detected within the collapsed caldera from a highly anomalous stream sediment sample of 1,070ppb Au

Appendix 11: PNG – Key facts

PNG has a strong track record in developing mineral resource projects



PAPUA NEW GUINEA

- Proven jurisdiction for discovery and development of major mineral projects
- Long established laws and mining regulations, based on centralised government with Westminster system of democracy.
- Substantial Mining / Oil and Gas culture with an ever growing in-country skill base
- Population of 9 million, predominantly Christian with 90% of the population under the age of 54



FINANCIALS

- GDP average growth of circa 4% since 2000 with 26% of GDP exclusively from natural resources
- In 2019 a GDP of USD\$24.97 billion was recorded
- Corporate tax rate of 30%
- PNG Mineral Resources Authority and third party royalties – 2% + 0.5% production levy



MINING REGULATIONS

- EL – Exploration lease: Initial term of up to 2 years with renewal increments of 2 years
- SML – Special Mining lease: Large mines up to 40 years with specific renewal provisions
- ML – Mining lease: Initial 20 year term up to 60km² and renewal in 10 year increments
- PNG Government has a one time right upon conversion from EL to ML or SML to purchase up to a 30% interest in project at sunk cost